

Instructions For:

Superb Telescoping Retractor

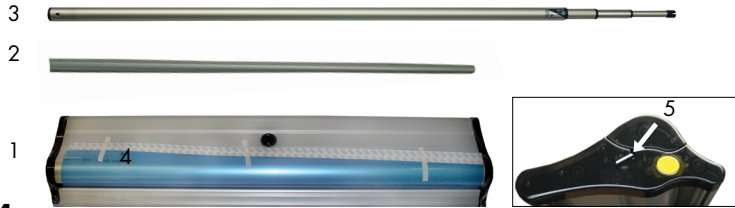
Product Specifications

Visible Graphic: 33.5" x 34.5" up to 78"
Total Graphic Print Size: 33.5" x 40.5" up to 84"
Bottom Bleed: 6" of material will roll into retractor
Foot Print Dimensions: 7¾" x 35½"



Product Parts

- 1 - Base
- 2 - Telescoping Pole
- 3 - Top Snap Rail
- 4 - Leader
- 5 - Pin



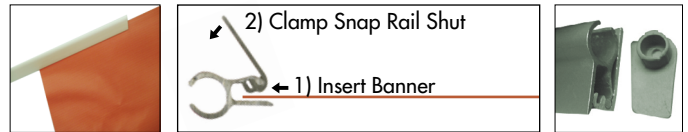
***Do not pull pin (5) until directed in Step 4**

Step 1

Remove all parts from the bag. Place the unit on the ground/work surface

Step 2

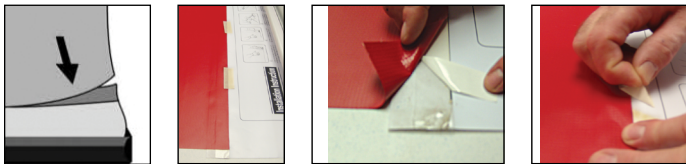
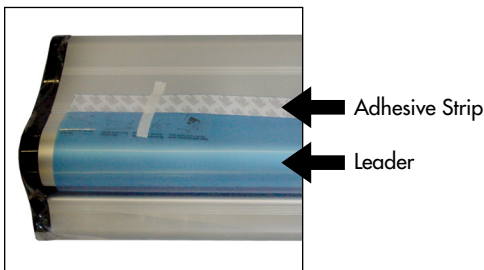
Open the Top Snap Rail (2) and insert the Banner. Close the Top Snap Rail firmly. Replace the plastic end caps onto the Top Snap Rail ends.



Use Leader with Adhesive

Step 3

Remove the tape holding the Leader (4) flat against the Base (1). Lay the base upside-down, allowing the Leader to lay flat with the adhesive side up. Lay the Banner, face up, over the Leader, aligning the bottom of the Banner with the bottom of the adhesive strip. Use masking tape to temporarily hold the banner in place. Remove the liner from the adhesive as you firmly press the banner to the adhesive, removing the masking tape as you reach it.



Step 4

While maintaining tension on the Banner, remove the locking Pin (5) from the side of the Base (1), and allow the Banner to slowly roll inside the Base.

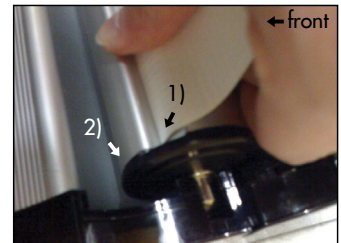
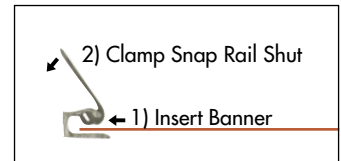
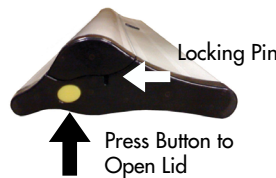


or

Use Internal Snap Rail

Step 3

Face the front of the Base (1) and open the Lid by pressing the yellow buttons on both sides of the Base. Be sure that the locking pin is in place in the hole in the side of the Base. Open the Internal Snap Rail and remove the Leader. Insert the banner and clamp the Internal Snap Rail shut. The banner installs in the same place where the Leader (4) comes out.



Step 4

While maintaining tension on the Banner, remove the locking Pin (5) from the side of the Base (1), and allow the Banner to slowly roll inside the Base.



Instructions Continued One Next Page

Instructions For:

Superb Telescoping Retractor (Continued)

Step 5

Insert the Telescoping Pole (3) into the hole in the center of the Base (1). Rotate the bottom segment of the pole until it is locked.



Step 6

Pull the Top Snap Rail (2) (with the banner now attached) slightly out of the Base.

Pull the Top Snap Rail (2) to the top of the Telescoping Pole (3). Insert the Top Cap of the Pole into the Top Snap Rail.

Adjust the height of the Pole to fit the height of the visible graphic.

