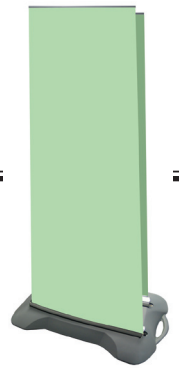


Instructions For:

Outdoor Retractor

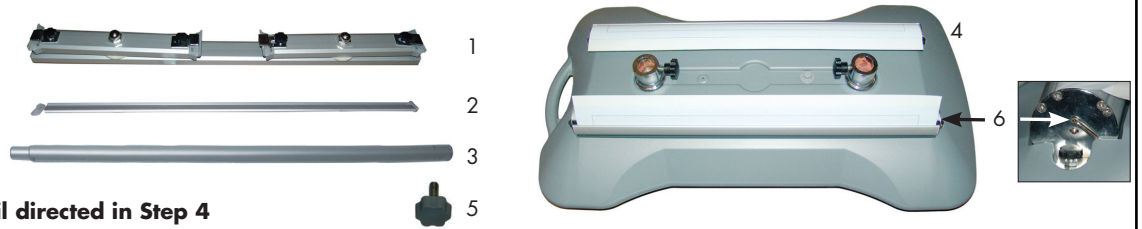
Product Specifications

Visible Graphic: 33.5" x 62.75", 33.5" x 70.75" or 33.5 x 78.75"
Total Graphic Print Size: 33.5" x 68.75", 33.5" x 78.75" or 33.5 x 84.75"
Bottom Bleed: 6" of material will roll into retractor



Product Parts

- 1 - Top Rail
- 2 - Banner Rail (x2)
- 3 - Telescoping Pole (x2)
- 4 - Base
- 5 - Handled Screw (x2)
- 6 - Pin ***Do not pull pin until directed in Step 4**

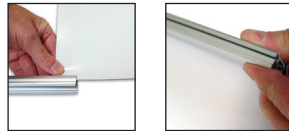


Step 1

Take all parts out of the bag & place the banner on a flat surface.

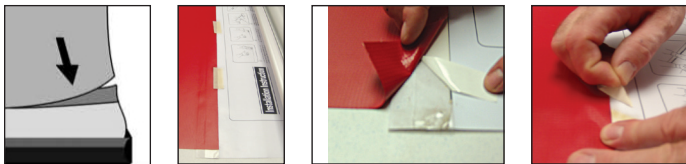
Step 2

Attach Banner Rail (2) to banner by removing ends and sliding on from corner as shown. Press firmly to close the snap rail securely.



Step 3

Remove the tape holding the Leader flat against the Base (1). Lay the base upside-down, allowing the Leader to lay flat with the adhesive side up. Lay the Banner, face up, over the Leader, aligning the bottom of the Banner with the bottom of the adhesive strip. Use masking tape to temporarily hold the banner in place. Remove the liner from the adhesive as you firmly press the banner to the adhesive, removing the masking tape as you reach it.



Step 4

Close the Lid (4).

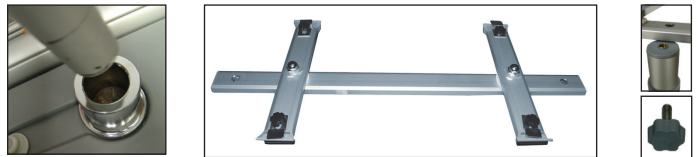
Firmly hold Base (1) and banner while removing the pin. Slowly allow banner to roll into the Base (4).



****Save the pin for future graphics changes.****

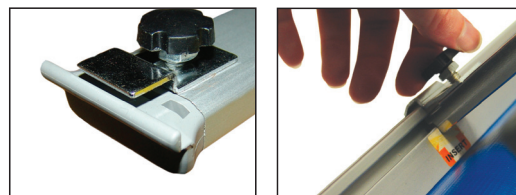
Step 5

Place each Telescoping Pole (3) In the raised Holes on the Base (4). Rotate the small bars perpendicular to the main bar on the Top Bar (1), place the ends over each Telescoping Pole (3) and use the handled Screws (5) to secure them.



Step 6

Partially loosen the small black handled screws on the ends of the swinging bars on the Top Bar (1). Gently pull on the Banner Rail (2). Slip the hooks on the ends of the Top Bar (1) into slit in the slit in the back of the Banner Rail (2) and tighten the small black handled screws. Repeat with the second Banner Rail (2).



Step 7

With both Banner Rails (2) secured on the Top Bar (1), press in the positioning clip on the Telescoping Poles (3) and begin extending them upwards. Do so until the Banner is at the desired height, and the positioning clip snaps firmly into place on each Pole (3).

