

Catchlight Tabletop Lightbox

CL-TBLTP-LB-01

Promote a brand in simple and elegant fashion with the Catchlight Tabletop Light Box. This light box displays double-sided graphics enhanced by LED lighting and three LED brightness settings. Its rechargeable battery lasts 8-14 hours depending on LED brightness setting. It's a great addition to any exhibit or retail counter-top.



We are continually improving and banner our product range and reserve the right to vary the specifications without prior notice. All dimensions and weights quoted are approximate and we accept no responsibility for variance. E&OE. See Graphic Templates for graphic bleed specifications

features and benefits:

- Bright LED Double-sided display
- Rechargeable
- Portable
- Three brightness levels
- USB-C charge port
- Runtime: 8 to 14 hours
- Charging time: 2 hrs to 90% capacity, 3-4 hrs to 100%

dimensions:

Hardware

Assembled unit:

Assembled unit:
9.25" w x 12.75" h x 3.25" d
235mm (w) x 324mm (h) x 83mm (d)

Approximate weight:
2.5 lbs / 1.2 kg

Shipping

1 Box(es):

Shipping dimensions:

14" L x 3.75" H x 3.75" d
356mm (w) x 95m (h) x 95mm (d)

Approximate total shipping weight: 3 lbs / 1.4 kg

Graphics

Graphic material:
Backlit banner film

See graphic templates for graphic sizes.
Graphic will pack in a separate box.

Refer to related graphic templates for
more information visit:

[https://
www.theexhibitorshandbook.com/downloads/
download-graphic-templates](https://www.theexhibitorshandbook.com/downloads/download-graphic-templates) or click here

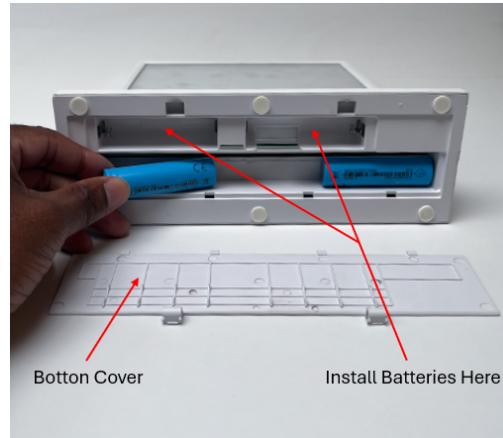
additional information:

*Available in white only

*Charging block not included.

Catchlight Tabletop Lightbox

1



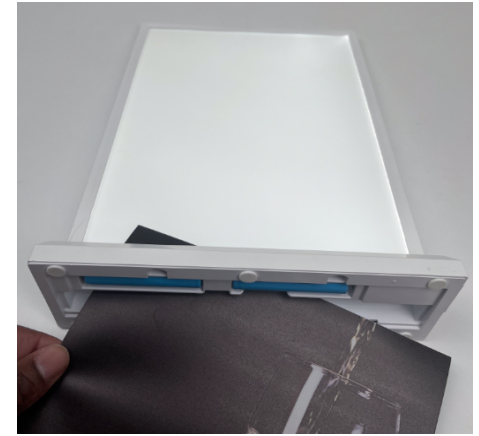
Batteries are shipped on top of the graphic holder. Remove batteries and install in the battery compartment above the graphic holder.

2



Remove graphic holder.

3



Slide the graphic into the display

4



Press the power button to turn on. Each press dims brightness. Use the the USB-C port to charge.