

Fast Frame Foldaway Counter

FF-CT-CL-BL

Our Fast Frame Foldaway Counter is designed with convenience in mind. It's lightweight, portable and can be ready for any event in seconds. Assembly is a breeze and requires no tools. The counter is backlit and uses SEG graphics to enhance your brand presence. LED lights are attached to the counter top and base to illuminate vibrant SEG fabric graphics.



features and benefits:

- SEG fabric graphic
- LED lights attached to counter top and base
- 10 ft. power cord
- Collapsible and lightweight
- Portable and easy to assemble
- No tools required
- Durable black counter-top supports up to 40 lbs.
- Soft protective carry case
- 1 year hardware warranty
- 6 month graphic warranty

dimensions:

| Hardware | Shipping |
|--|---|
| <p>Assembled unit:</p> <p>Assembled unit: 31.5" w x 40" h x 19" d 800mm (w) x 1016mm (h) x 483mm (d)</p> <p>Approximate weight: 26.5 lbs / 12 kg</p> | <p>1 Box(es):</p> <p>Shipping dimensions: 33.5" w x 21.5" h x 5.5" d 851mm (w) x 546mm (h) x 140mm (d)</p> <p>Approximate total shipping weight: 29 lbs / 13.1 kg</p> |

Graphics

Graphic material:
Backlit Textile (dye-sublimated fabric) or Intensity (UV printed)

See graphic templates for graphic sizes.
Graphic will pack in a separate box.

Refer to related graphic templates for more information visit:

<https://www.theexhibitorshandbook.com/downloads/download-graphic-templates>
or click here

additional information:

*Counter top available in black only.

We are continually improving and banner our product range and reserve the right to vary the specifications without prior notice. All dimensions and weights quoted are approximate and we accept no responsibility for variance. E&OE. See Graphic Templates for graphic bleed specifications

Fast Frame Foldaway Counter

1



Lay on flat surface and open case. Make sure the top of the counter is facing up. The smooth side is the top side.

2



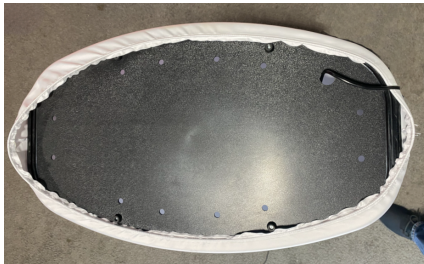
While holding both sides of the top, pull upward until the counter is fully extended. Remove from case and test lights before installing graphic.

3



With the counter fully extended, pull the graphic fully over the top until it rests at the bottom.

4



Turn the counter upside down. Pull graphic over bottom and push the silicone bead into the SEG channel. **BE SURE TO CENTER THE SEAMS ON THE SIDES. This will ensure proper fit.**

5



Flip the counter back over, pull the graphic up over the top, and push the silicone bead into the SEG channel. TIP: Depress the counter slightly while inserting SEG bead.

6



Unit assembly is complete. Push down on the top to collapse the counter. Graphic does not need to be removed for storage.