

## PARTS GUIDE

Please remove all parts from the boxes and review them. Contact your service representative if there are any missing parts.



Umbrella frame



Lower shaft extension



Canopy

## ADDITIONAL FRAME STYLES



10ft Casita Canopy



15ft Casita Canopy



20ft Casita Canopy



Canopy Backwall

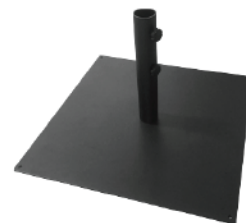


Canopy Halfwall



Heat Press Casitas

## OPTIONAL ACCESSORY



Steel base

# SKYCAP UMBRELLA

---

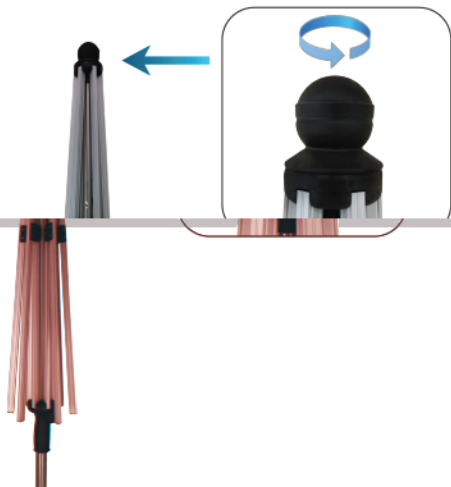
## SET UP INSTRUCTIONS



## INSTALLATION STEPS

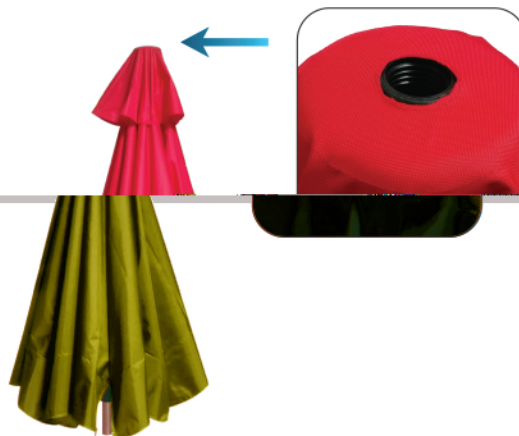
### Step 1

Start by installing the umbrella onto the frame. Locate the finial at the top of the frame and remove it.



### Step 2

Unravel the umbrella and place it over the frame. Align the opening at the peak with the hole from which the finial was removed.



(2nd FOLD HERE)

### Step 3

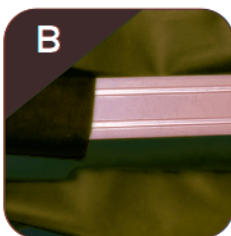
Slightly screw the finial back on. Do not tighten it completely.



(1st FOLD HERE)

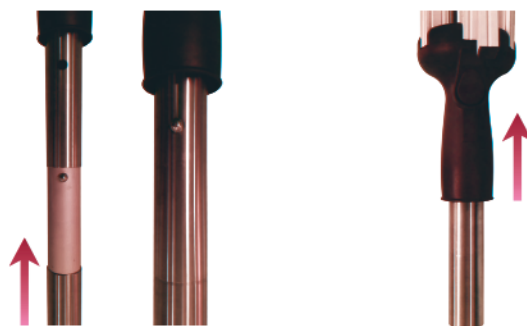
### Step 4

Locate the tabs that are sewn on the inside of the umbrella. Slide each rib into a tab until all of them are securely in place and then tighten the finial.



### Step 5

Insert the lower shaft by holding the push-out cap in and then sliding the shaft on until the cap forces itself out. To open up the umbrella, slide the runner up the shaft until it locks onto the latch. Press the button and slide the runner back down to close the umbrella.



### Step 6

The umbrella is ready to be fitted to either a steel base, table, or both for optimal support.

