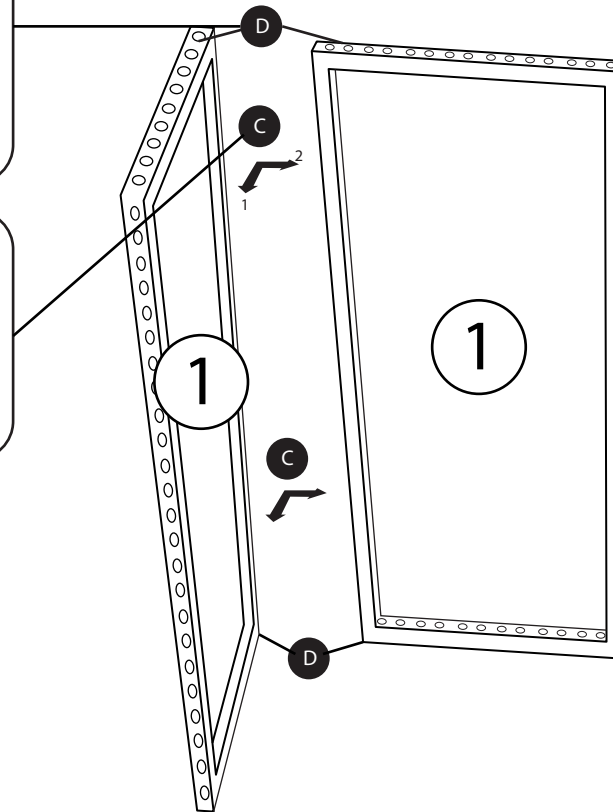
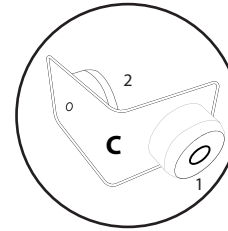
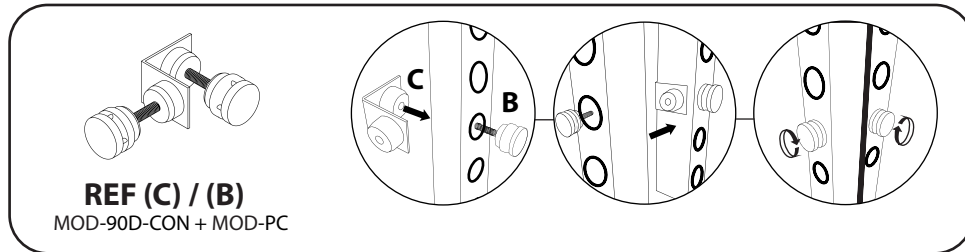
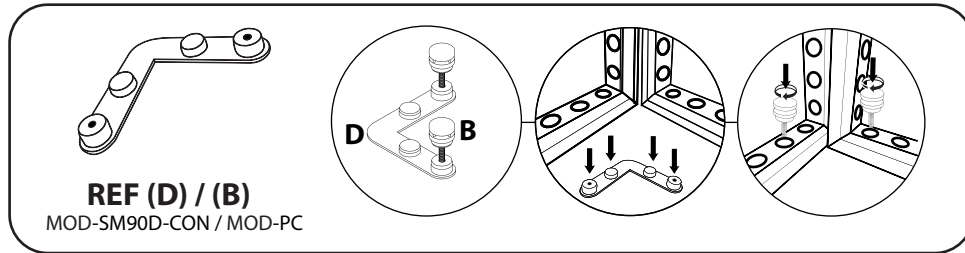


**MODCO 8 - 10x20**



# MODCO 8 - 10x20

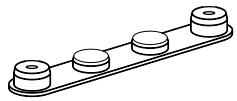
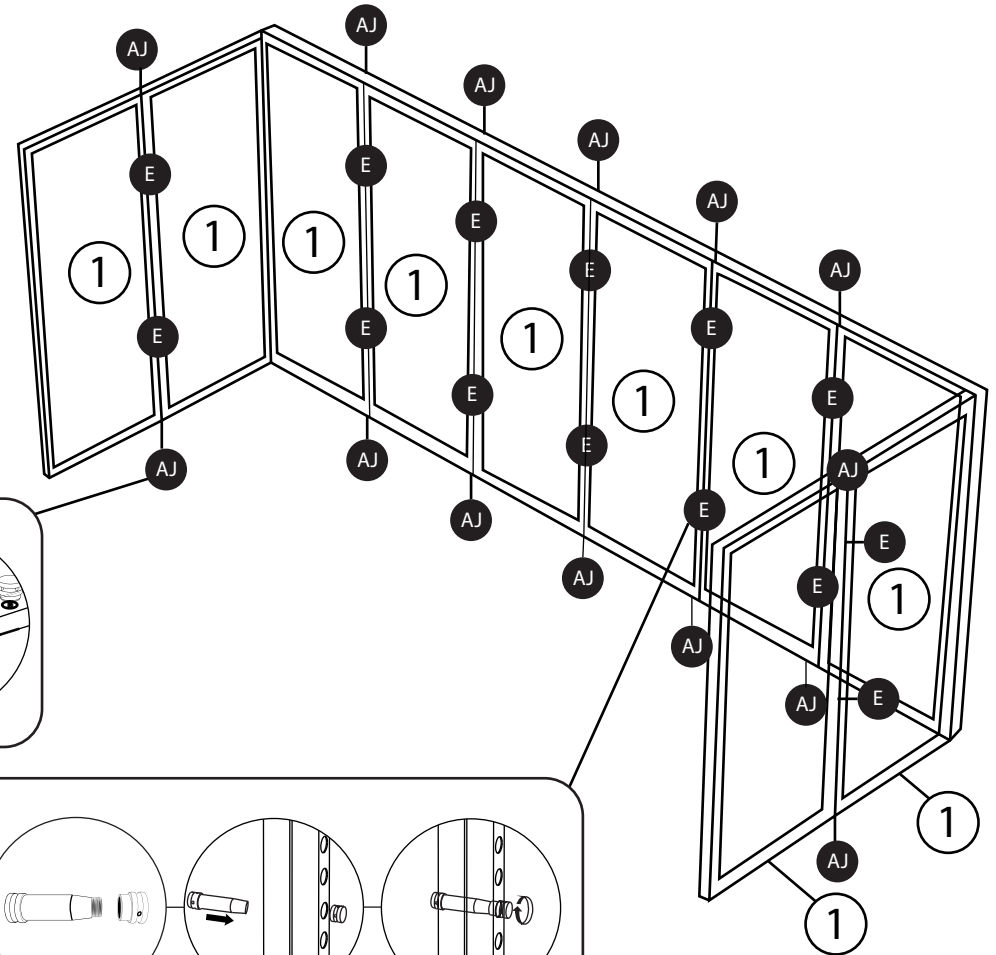
- Use REF column to reference parts. Begin backwall with an adjacent frame to create a 90° corner. Repeat for opposite end.



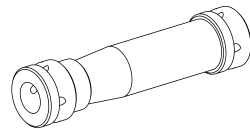
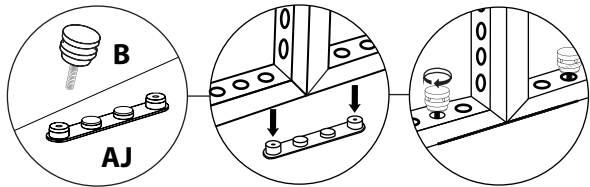
PARTS LIST (BACK WALL)			
REF	QTY	PART NO.	DESCRIPTION
1	10	MOD-FRM-992x2418	Straight Frame, Corner Screw Connect 992mm x 2418mm
B	44	MOD-PC	Pin Connector
E	14	MOD-CLA-CON	Clamp Connector
C	4	MOD-90D-CON	90° Connector
D	4	MOD-SM90D-CON	Top and Bottom 90° Connector
AJ	14	MOD-180D-CON	180 Degree Connector

# MODCO 8 - 10x20

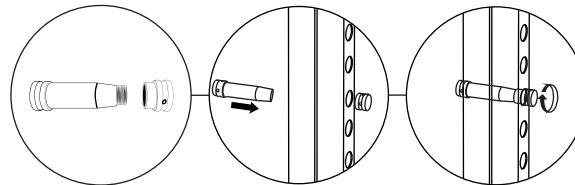
- Use REF column to reference parts. Complete the backwall.



**REF (AJ) / (B)**  
MOD-180D-CON / MOD-PC



**REF (E)**  
MOD-CLA-CON

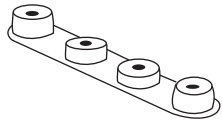


## PARTS LIST (BACK WALL)

REF	QTY	PART NO.	DESCRIPTION
1	10	MOD-FRM-992x2418	Straight Frame, Corner Screw Connect 992mm x 2418mm
B	36	MOD-PC	Pin Connector
E	14	MOD-CLA-CON	Clamp Connector
C	4	MOD-90D-CON	90° Connector
D	4	MOD-SM90D-CON	Top and Bottom 90° Connector
AJ	14	MOD-180D-CON	180 Degree Connector

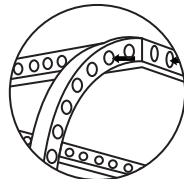
# MODCO 8 - 10x20

- Use REF column to reference parts. Complete the arch and repeat for two total.

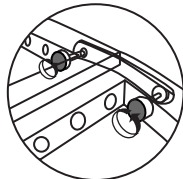


**REF Left (F) or Right (G) + (B)**

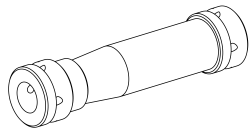
MOD-CRV-180DC / LEFT & RIGHT and MOD-PC v



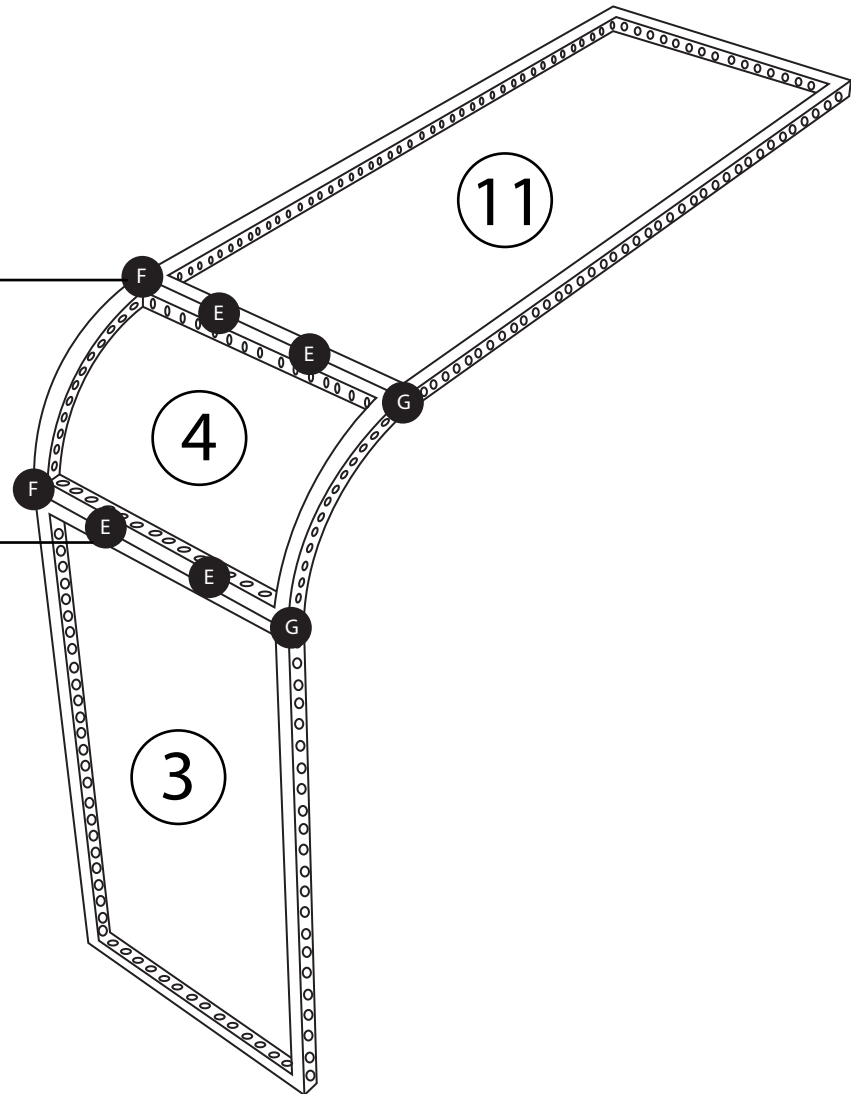
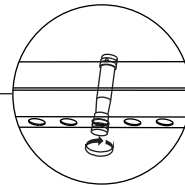
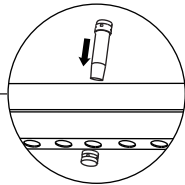
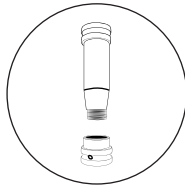
**OUTSIDE**



**INSIDE**



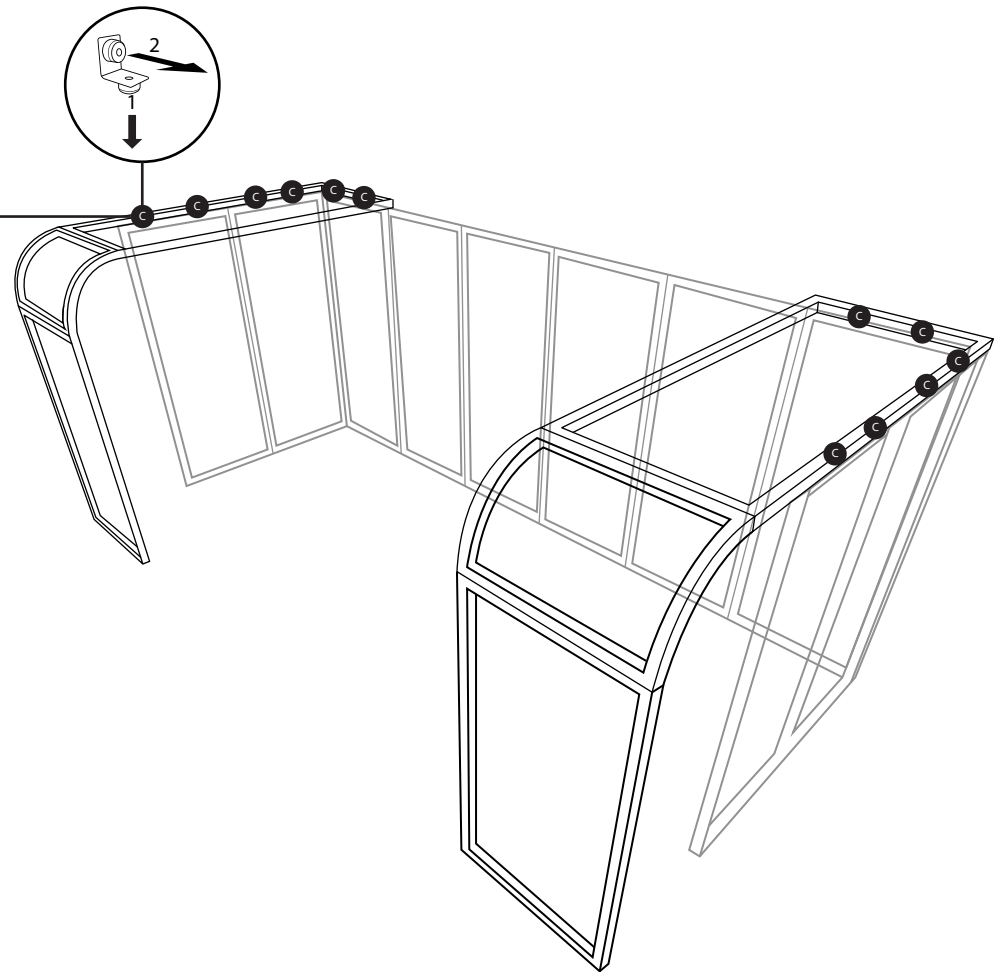
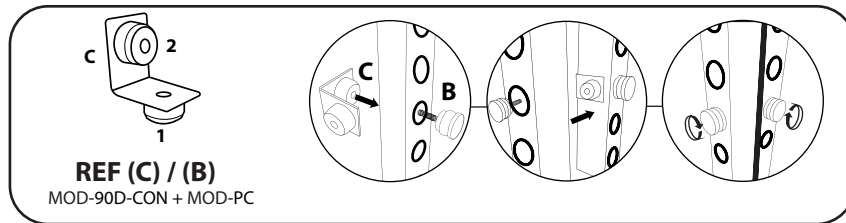
**REF (E)**  
MOD-CLA-CON



PARTS LIST (CANOPY/ARCH)			
REF	QTY	PART NO.	DESCRIPTION
11	2	MOD-FRM-992x2480	Straight Frame, Corner Screw Connect 992mm x 2480mm
3	4	MOD-FRM-992x1984	Straight Frame, Corner Screw Connect 992mm x 1984mm
4	2	MOD-CRVFRM-774x992	1/4 Curved Frame, Welded 774mm x 992mm
F	4	MOD-CRV-180DCL	Curve 180 Degree Connector (Left)
G	4	MOD-CRV-180DCR	Curve 180 Degree Connector (Right)
E	14	MOD-CLA-CON	Clamp Connector
B	40	MOD-PC	Pin Connector
C	12	MOD-90D-CON	90° Connector

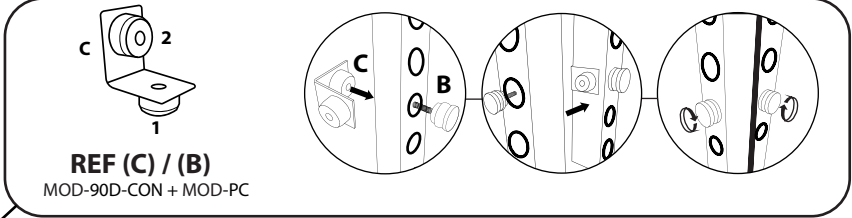
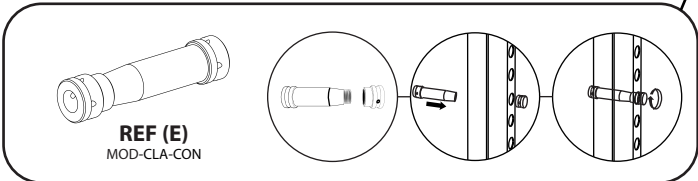
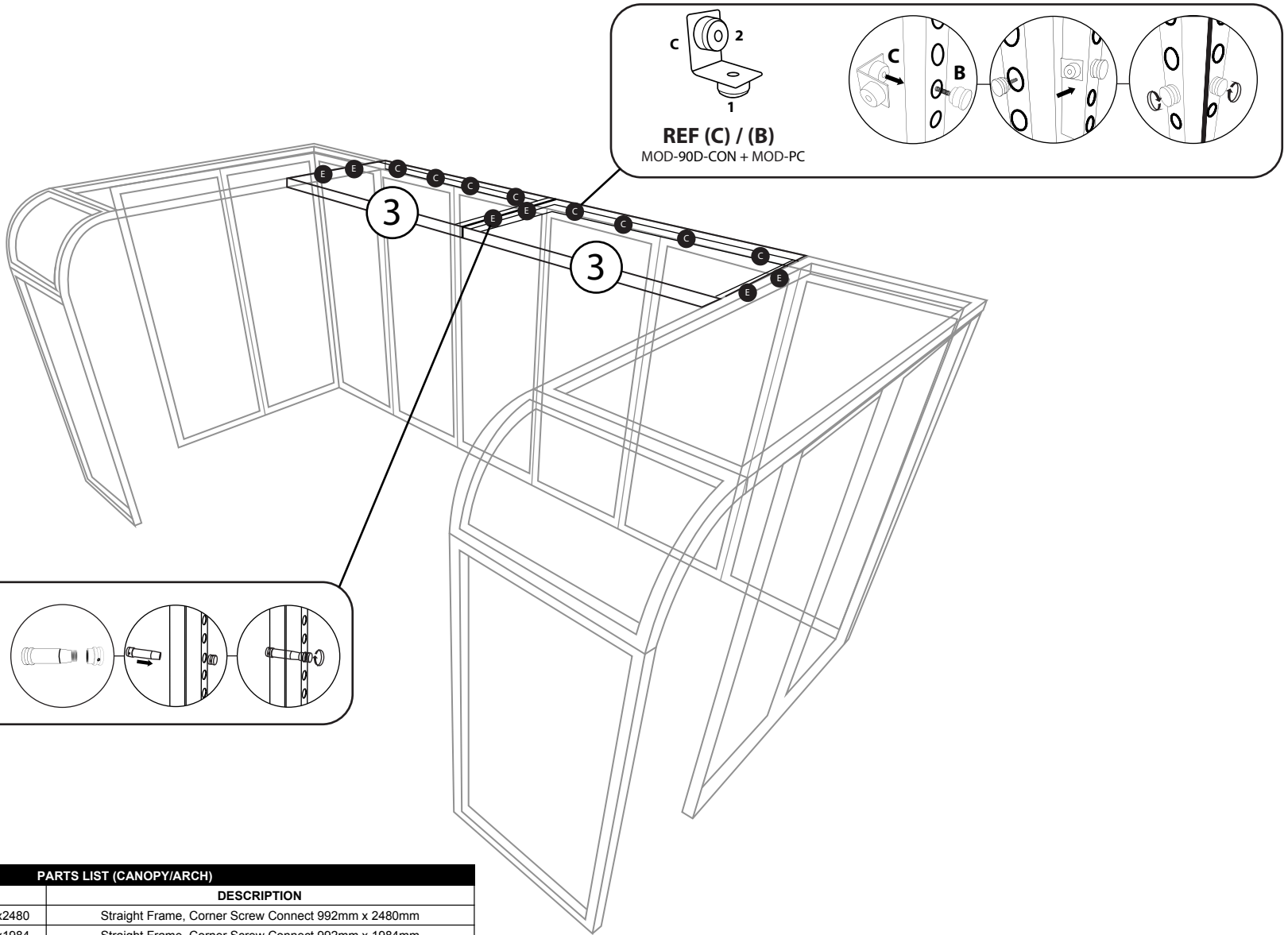
# MODCO 8 - 10x20

- Use REF column to reference parts. Attach both arches to back wall - one at each opposite end.



PARTS LIST (CANOPY/ARCH)			
REF	QTY	PART NO.	DESCRIPTION
11	2	MOD-FRM-992x2480	Straight Frame, Corner Screw Connect 992mm x 2480mm
3	4	MOD-FRM-992x1984	Straight Frame, Corner Screw Connect 992mm x 1984mm
4	2	MOD-CRVFRM-774x992	1/4 Curved Frame, Welded 774mm x 992mm
F	4	MOD-CRV-180DCL	Curve 180 Degree Connector (Left)
G	4	MOD-CRV-180DCR	Curve 180 Degree Connector (Right)
E	14	MOD-CLA-CON	Clamp Connector
B	40	MOD-PC	Pin Connector
C	12	MOD-90D-CON	90° Connector

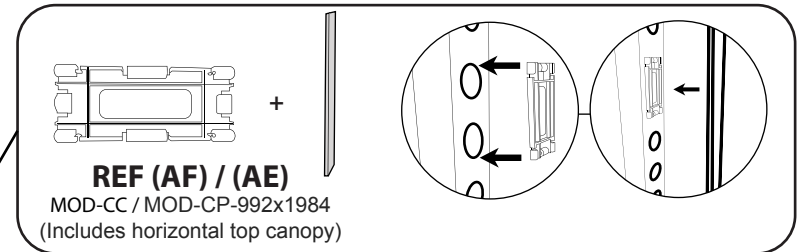
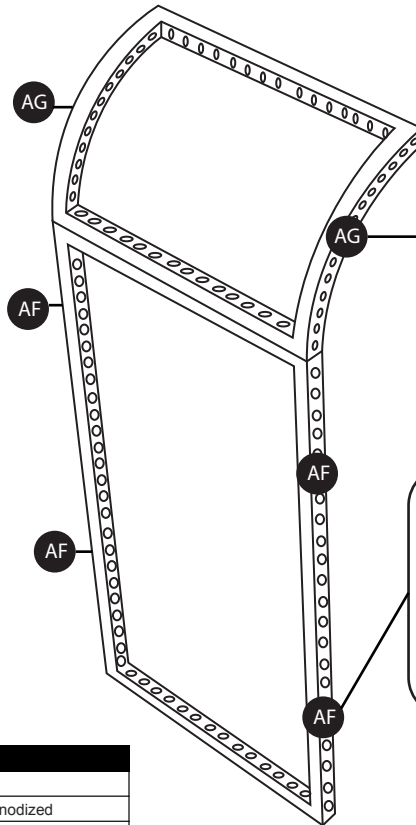
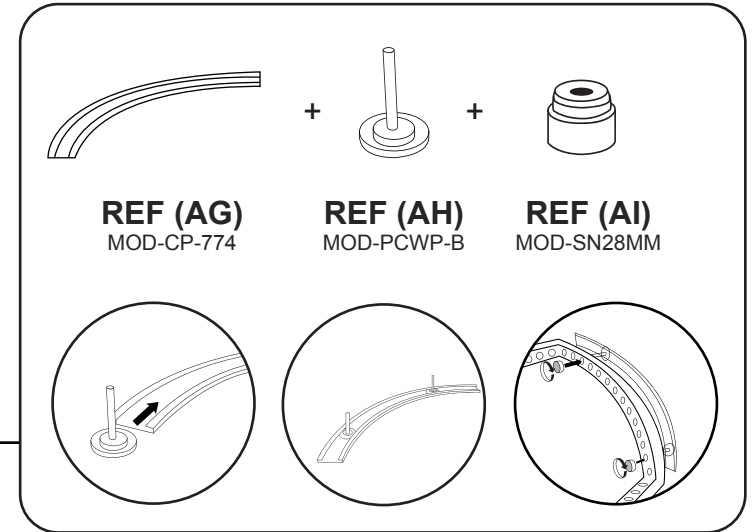
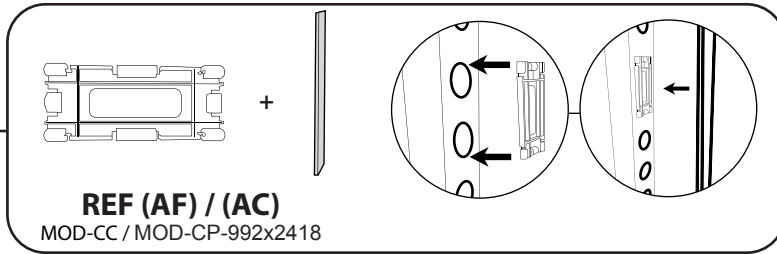
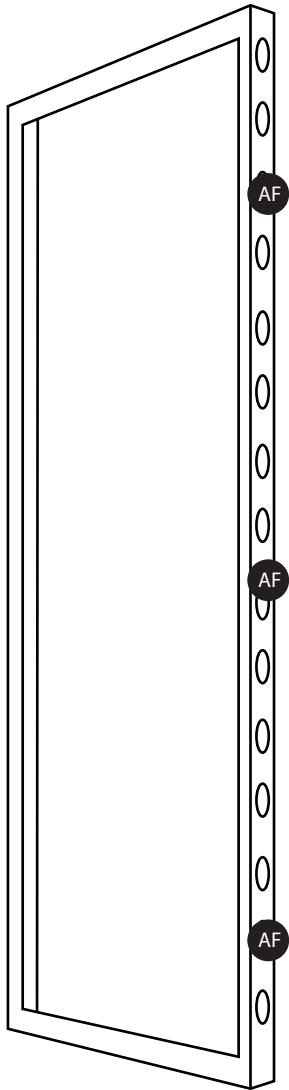
# MODCO 8 - 10x20



PARTS LIST (CANOPY/ARCH)			
REF	QTY	PART NO.	DESCRIPTION
11	2	MOD-FRM-992x2480	Straight Frame, Corner Screw Connect 992mm x 2480mm
3	4	MOD-FRM-992x1984	Straight Frame, Corner Screw Connect 992mm x 1984mm
4	2	MOD-CRVFRM-774x992	1/4 Curved Frame, Welded 774mm x 992mm
F	4	MOD-CRV-180DCL	Curve 180 Degree Connector (Left)
G	4	MOD-CRV-180DCR	Curve 180 Degree Connector (Right)
E	14	MOD-CLA-CON	Clamp Connector
B	40	MOD-PC	Pin Connector
C	12	MOD-90D-CON	90° Connector

# MODCO 8 - 10x20

- Use REF column to reference parts. Attach cover profile to each exposed side.



COVER PROFILES & ACCESSORIES			
REF	QTY	PART NO.	DESCRIPTION
AC	4	MOD-CP-992x2418	Cover Profile for Frame 992x2418. Flat Model. Anodized
AD	2	MOD-CP-992x2480	Cover Profile for Frame 992x2480. Flat Model. Anodized
AI	8	MOD-SN28mm	28mm screw nut
AH	8	MOD-PCWP-B	Pin connector(use with profile cover)
AG	4	MOD-CP-774	Curved Cover profile 774mm(R1/4)
AE	6	MOD-CP-3100	Cover Profile for Frame 992x1984. Flat Model. Anodized
AF	51	MOD-CC	Clip Connector Cover Connects Cover Profile

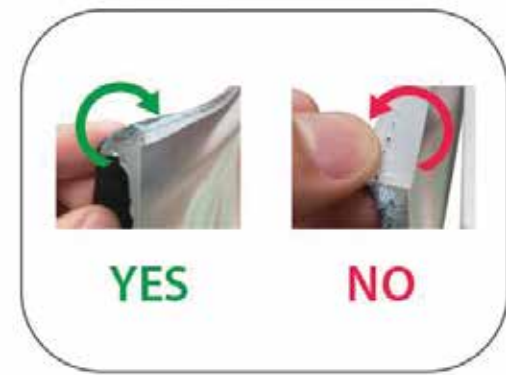
# GRAPHIC INSTALL



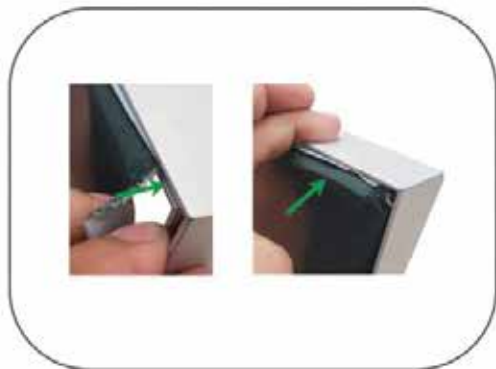
Place graphic over the front of the frame.



Begin inserting SEG beading at each corner.



Insert the silicone beading with the fabric folded over. The silicone beading should not be exposed.



Using your fingers, push both fabric and silicone beading completely into the extrusions channel.



Continue to push in the remaining silicone beading on each side.



Check the perimeter of the frame for any excess beading that hasn't been pushed in. Graphic should be taut.