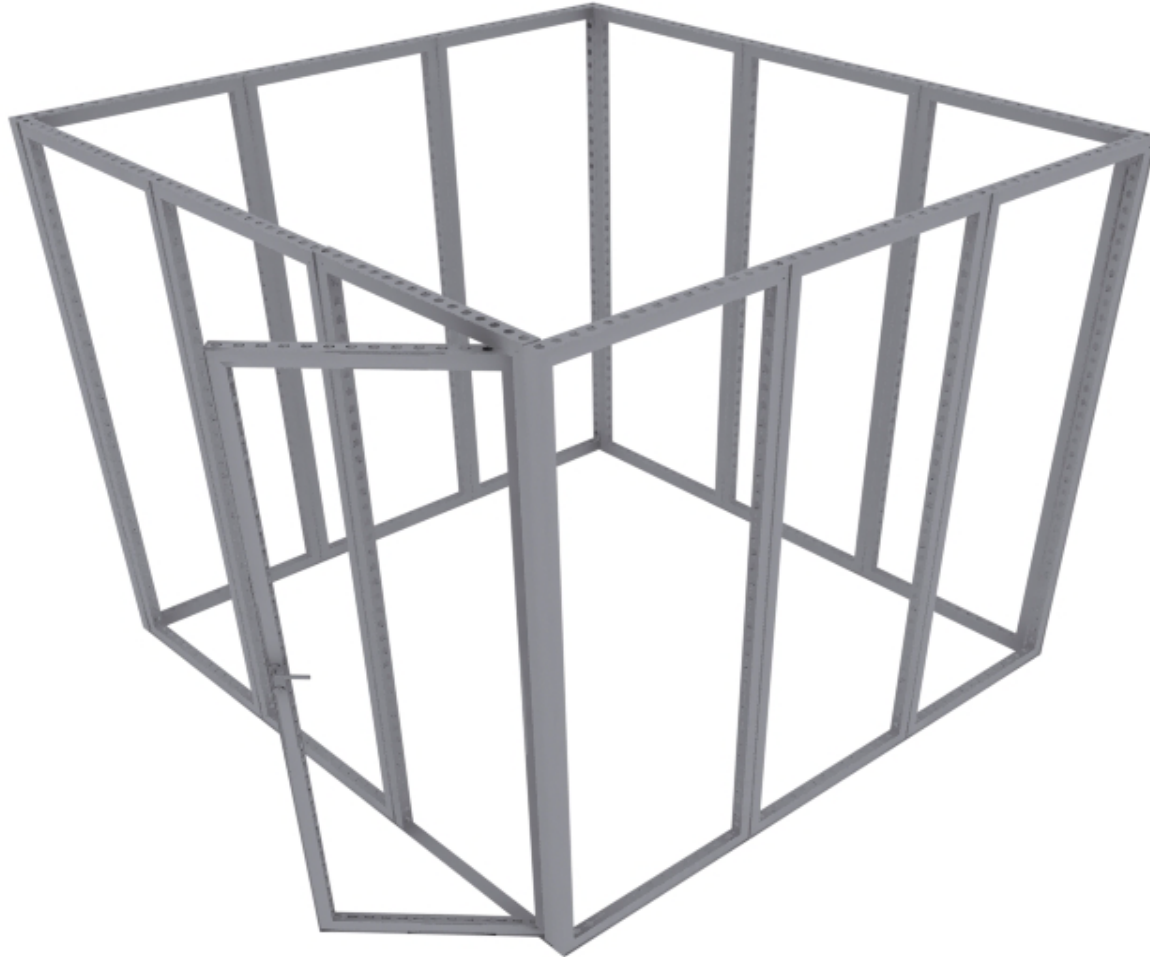
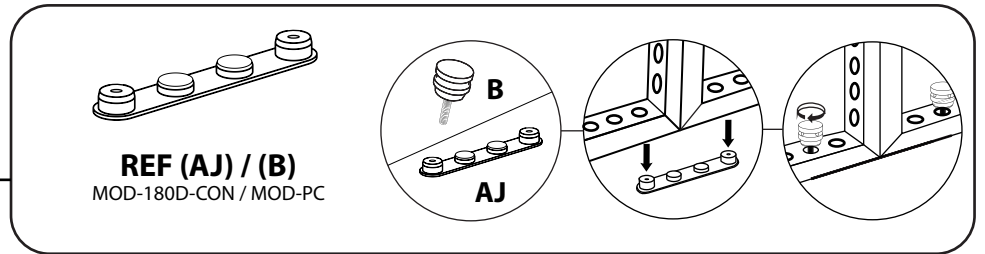
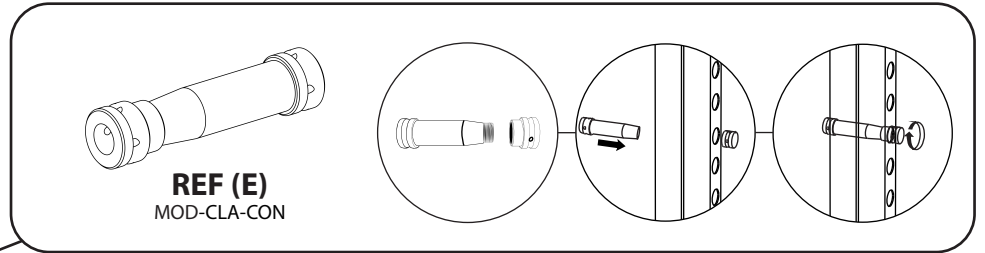
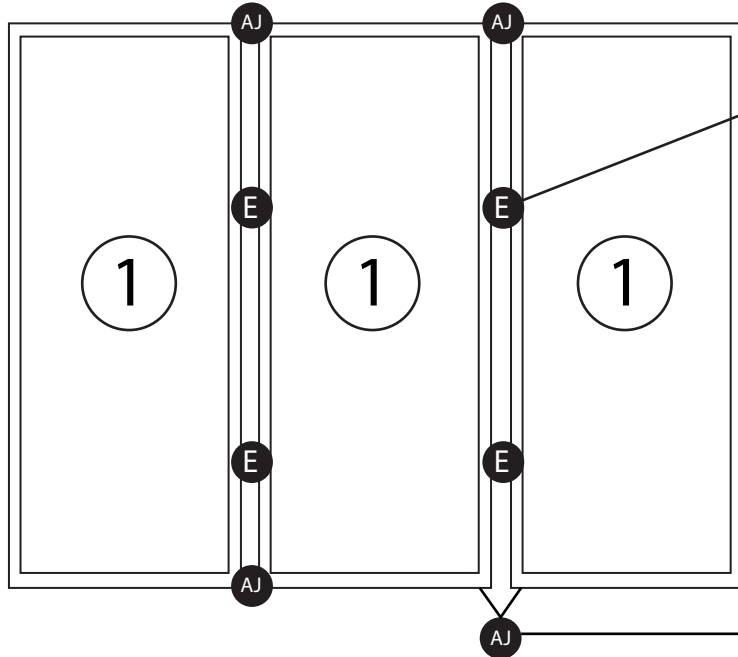


MODCO 6 - 10X10



MODCO 6 - 10X10

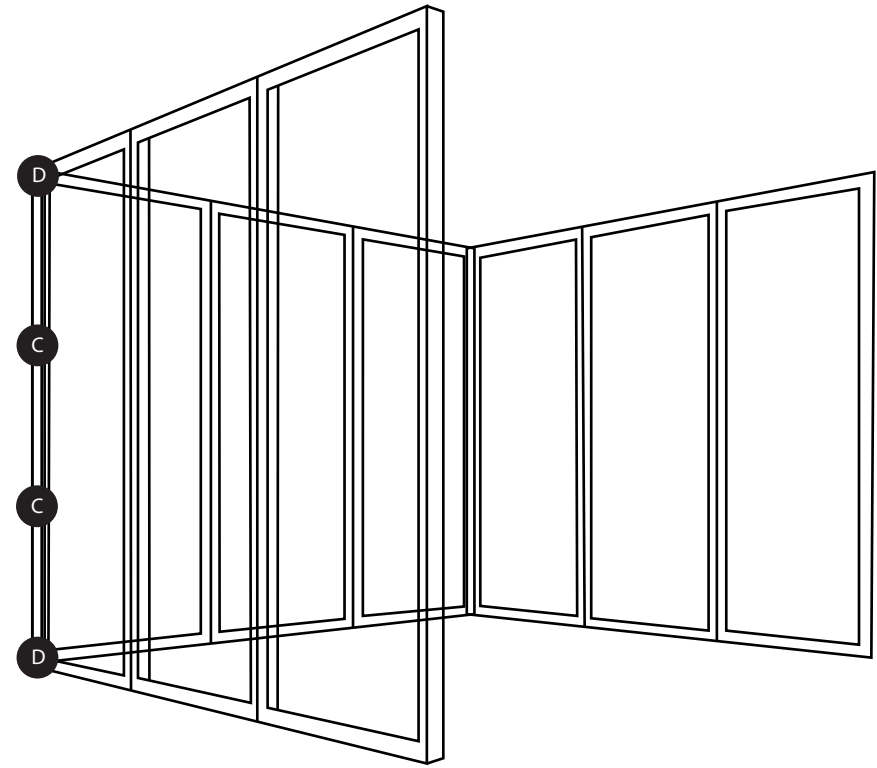
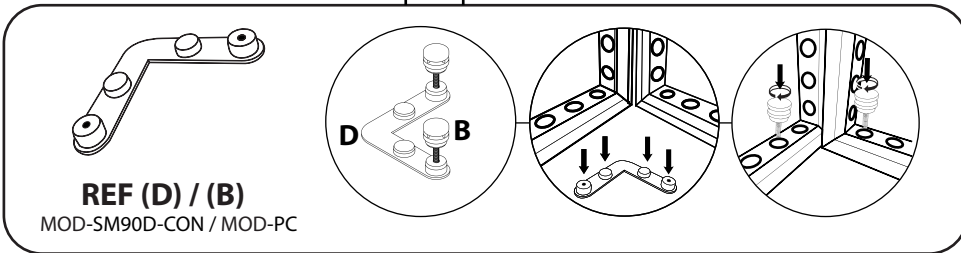
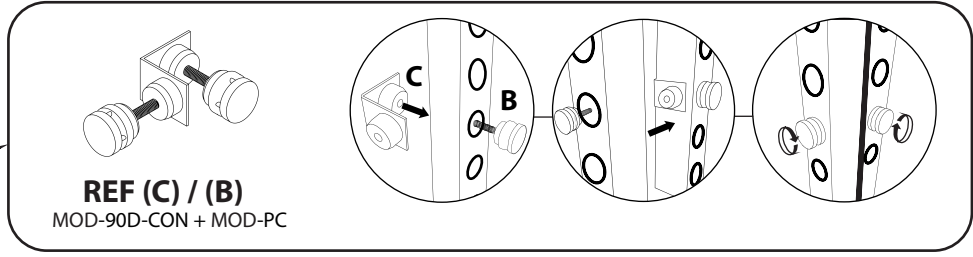
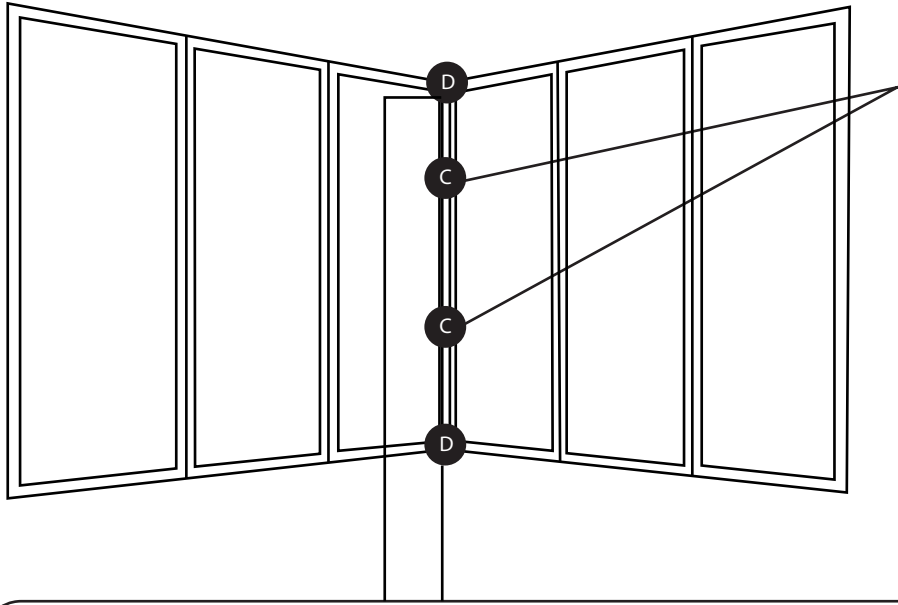
- Use REF column to reference parts. Repeat this step until you have a total of 3 walls.



PARTS LIST (ROOM)			
REF	QTY	PART NO.	DESCRIPTION
1	11	MOD-FRM-992x2418	Straight Frame, Corner Screw Connect 992mm x 2418mm
2	1	MOD-DSWL-992x2418	Door Set w/ Lock 992mm x 2418mm
E	14	MOD-CLA-CON	Clamp Connector
AJ	15	MOD-180D-CON	180 Degree Connector
C	8	MOD-90D-CON	90° Connector
D	7	MOD-SM90D-CON	Small 90° Connector
A	4	MOD-PCWP-A	Pin Connector for Door Jamb
B	56	MOD-PC	Pin Connector
AA	2	MOD-DCC-180D	Door Clamp Connector, 180 Degrees (Connect to Wall Frame)

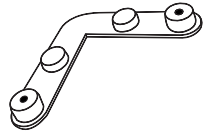
MODCO 6 - 10X10

- Use REF column to reference parts. Connect each wall to make a 90° corner. Repeat for opposite side.

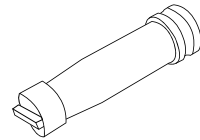
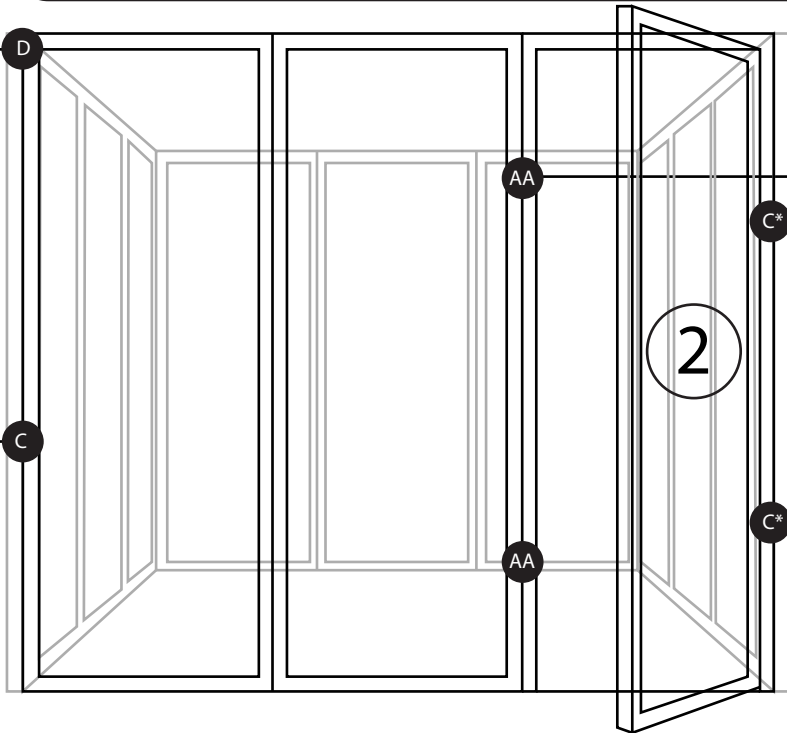
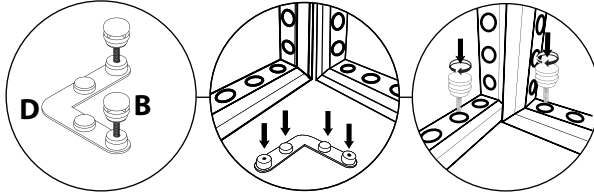


MODCO 6 - 10X10

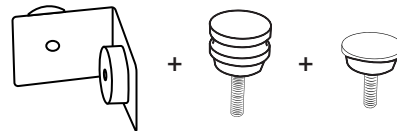
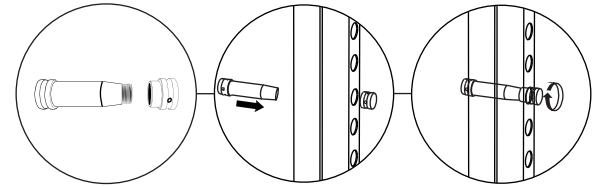
- Use REF column to reference parts. Complete final side/wall including door.



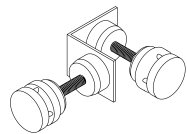
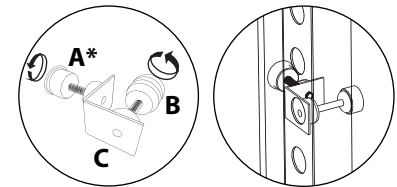
REF (D) / (B)
MOD-SM90D-CON / MOD-PC



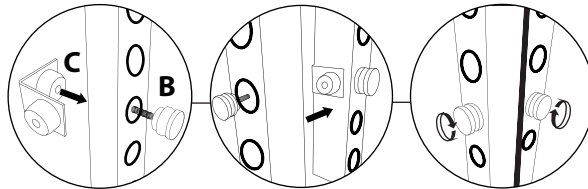
REF (AA)
MOD-DCC-180D



REF (C) + (B) + (A)
*MOD-PCWP-A will be inside of door hinge

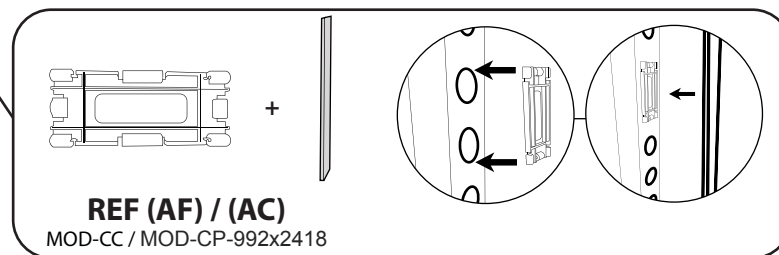
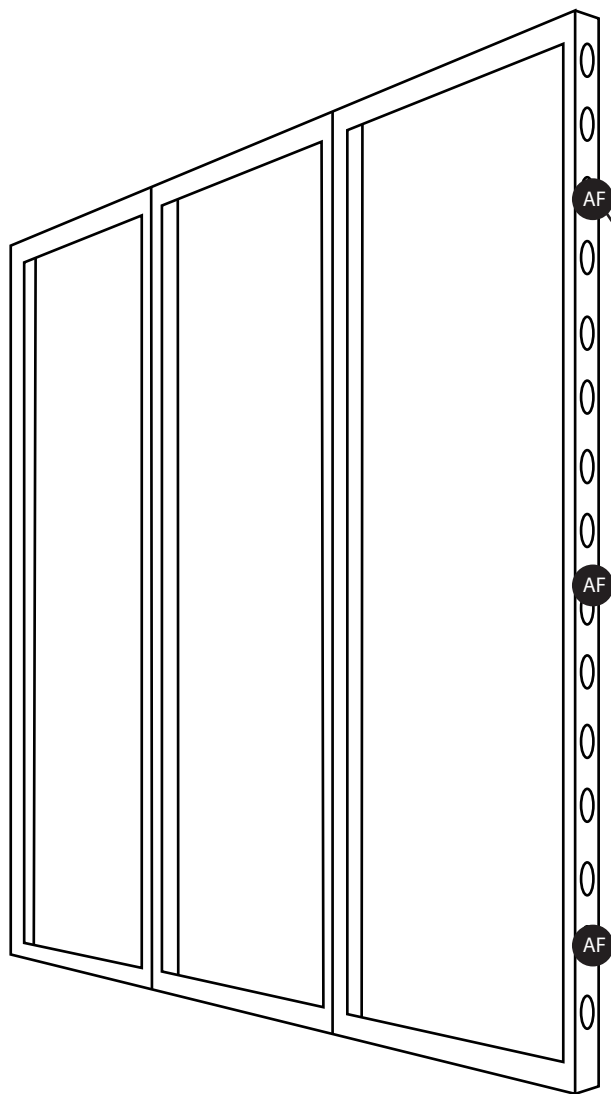


REF (C) / (B)
MOD-90D-CON + MOD-PC



MODCO 6 - 10X10

- Use REF column to reference parts. Attach cover profile to each exposed side (4 sides total).



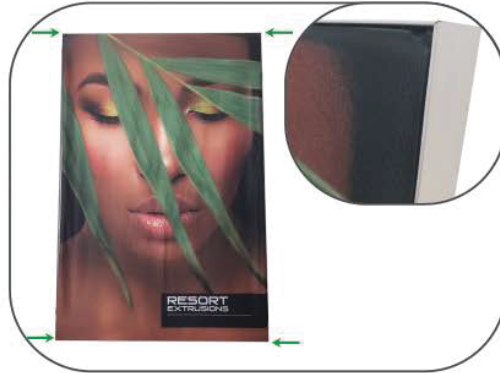
COVER PROFILES & ACCESSORIES

REF	QTY	PART NO.	DESCRIPTION
AC	4	MOD-CP-992x2418	Cover Profile for Frame 992x2418. Flat Model. Anodized
AF	12	MOD-CC	Clip Connector Cover Connects Cover Profile
AL	48	MOD-FP	Modco Frame Protector

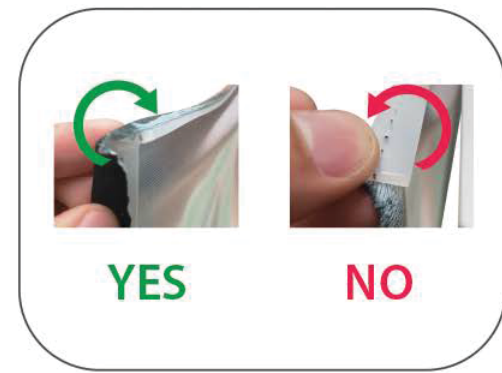
GRAPHIC INSTALL



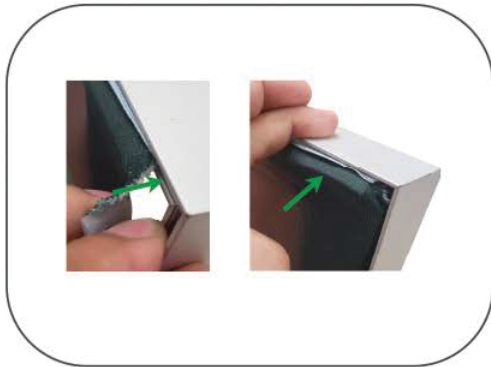
Place graphic over the front of the frame.



Begin inserting SEG beading at each corner.



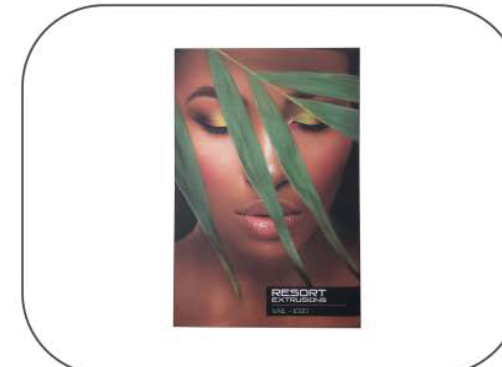
Insert the silicone beading with the fabric folded over. The silicone beading should not be exposed.



Using your fingers, push both fabric and silicone beading completely into the extrusions channel.



Continue to push in the remaining silicone beading on each side.



Check the perimeter of the frame for any excess beading that hasn't been pushed in. Graphic should be taut.