

20X10FT. LUMIERE CONTINUOUS NON-BACKLIT

LUMIERE LIGHT WALL

PRODUCT CODE: LLW8X4NBLCON



On frame On graphic

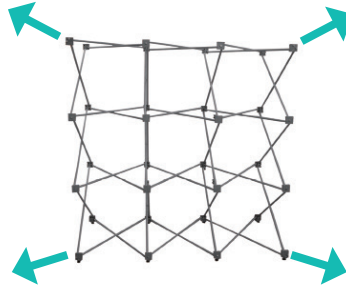
SET UP INSTRUCTIONS*

*IMAGES SHOW 10FT X 7FT FRAME, BUT 10FT X 10FT ASSEMBLY IS THE SAME

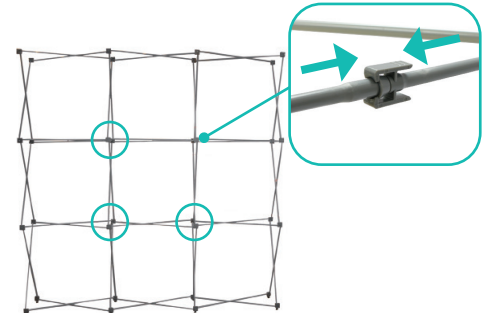
Set Up Pop Up Frame



a. Place frame with the adjustable feet facing down.

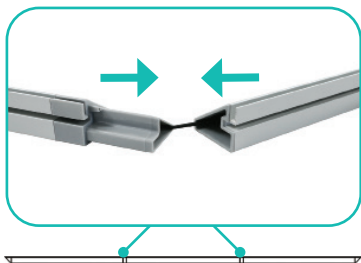


b. Expand the frame.

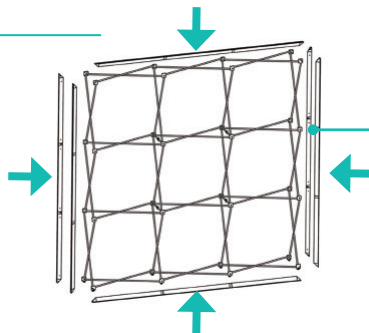


c. Close frame by pushing the outside of the frame until male and female ends connect.

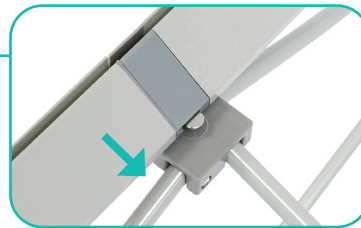
Attach Channel Bars



a. Expand each channel bar. Follow bungee to connect.



b. Attach channel bars to frame.



c. Slide channels bars onto frame, from top to bottom, then secure onto metal peg.



d. Attach the top and bottom end-caps on each side of the frame.

Install Graphics*



a. In each corner, insert the silicone edge beading into the groove.



b. Then insert the remainder of the beading.



c. Repeat graphic installation on the end caps.

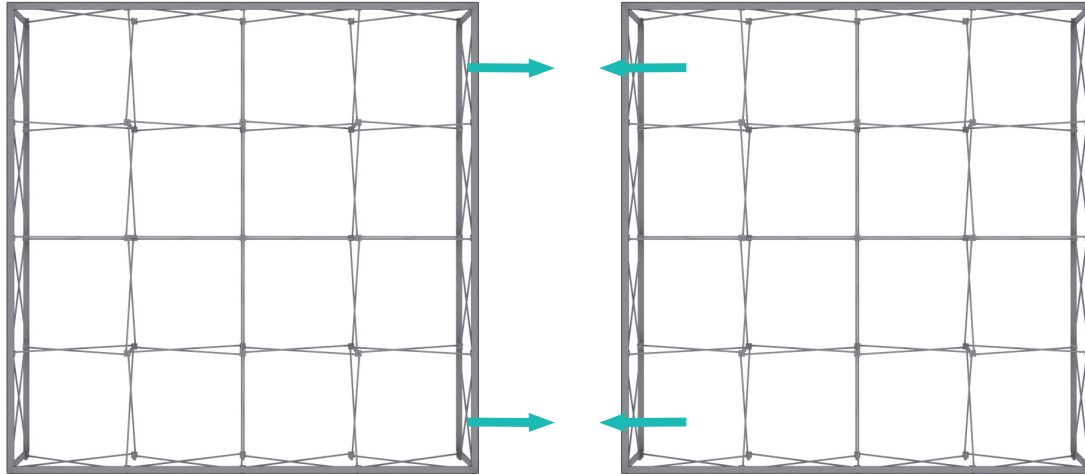
*Install graphics after connecting frames. Frame connection instructions are on next page

SET UP INSTRUCTIONS

Connecting Frames

Left Frame

Right Frame



Place the (2) 4x3 frames side by side and connect with Lumiere Straight Connectors

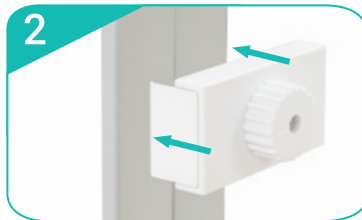
Notes:

- Connect frames before installing graphics

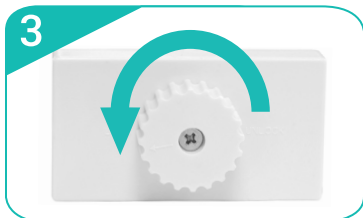
Straight Connection



*Starting from behind, make sure the frames are flushed next to each other.



Slide Straight Connector onto the channel bars of both frames.



Turn dial to the left to lock the Straight Connector in place. Repeat for each vertical sections (8 total).

