

EZ TUBE CONNECT RETURN WALL

PRODUCT CATEGORY: EZ FABRIC DISPLAYS

PRODUCT CODE: EZCNCT-RWL or EZCNCT-RWR



On Frame

On Graphic



Shown w/EZ Tube Connect 10ft*
*Not Included



Shown w/EZ Tube Connect 10ft*
*Not Included

PRODUCT DESCRIPTION

Enhance your EZ Tube Connect display with the EZ Tube Connect Return Wall, a versatile 90° addition designed to complement existing frames. Constructed with the same durable 34mm diameter tubing as the standard EZ Tube Connect frames, this return wall provides a seamless extension for your display.

Key features include:

Dual-Sided Compatibility: Attach to the left or right side of your display with included dual connection feet.

High/Low Stepped Design: Offers ample space for eye-catching graphics and impactful messaging.

Tool-Free Assembly: Easy to setup and connect without the need for tools.

Customizable Graphics: Display vibrant dye sublimated stretch fabric graphics with pillowcase-style finishing and a secure #10 zipper closure. Choose between single-sided or double-sided graphics. Single-sided options feature a choice of black or white back fabric with matching zipper color.

Each EZ Tube Connect Return Wall includes a convenient travel bag for portability. Supporting frames are sold separately. Recommended for indoor use only.

Elevate your display's functionality and impact with the EZ Tube Connect Return Wall.

DISPLAY DIMENSIONS	96"W x 90"H x 3.125"D
--------------------	-----------------------

GRAPHIC MATERIAL

Dye Sublimated Stretch Fabric

GRAPHIC FINISHING

Sewn on left, right and top with zipper on the bottom

DISPLAY CONSTRUCTION

34mm Aluminum Tubing

SHIPPING WEIGHTS & DIMENSIONS

Shipping Weight	36 lbs (Graphic Package) 30 lbs (Hardware Only) 6 lbs (Graphic Only)
Shipping Dimensions	46"W x 8"H x 8"D (Graphic Package) 46"W x 8"H x 8"D (Hardware Only) Polybag (Graphic Only)



Includes Travel Bag
SKU: EZT-BAG
BAG DIMS: 44.8" L x 14" W x 4.7" H



Dual Foot Connection



Connecting Clip

EZ TUBE CONNECT RETURN WALL

PRODUCT CATEGORY: EZ FABRIC DISPLAYS

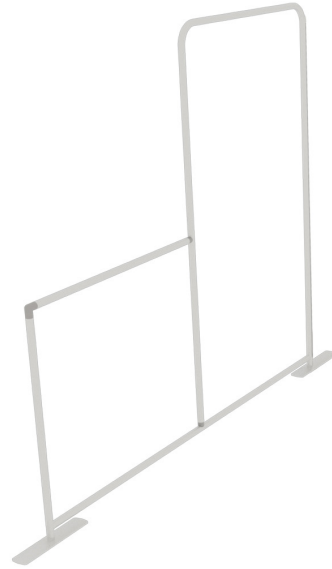
PRODUCT CODE: EZCNCT-RWL or EZCNCT-RWR



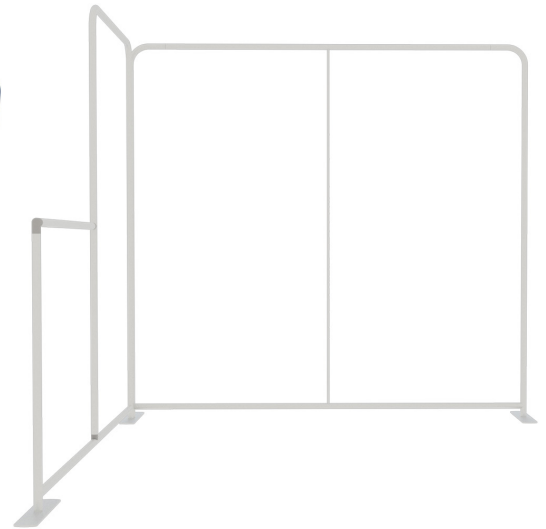
On Frame

On Graphic

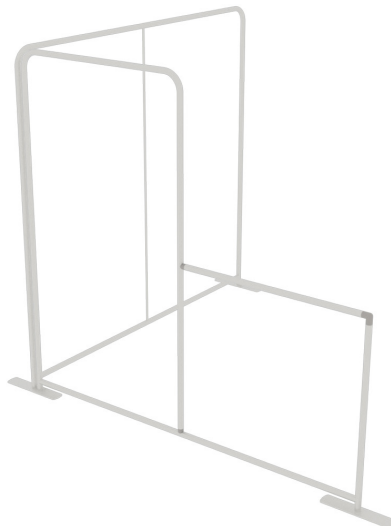
RETURN WALL - LEFT IMAGES



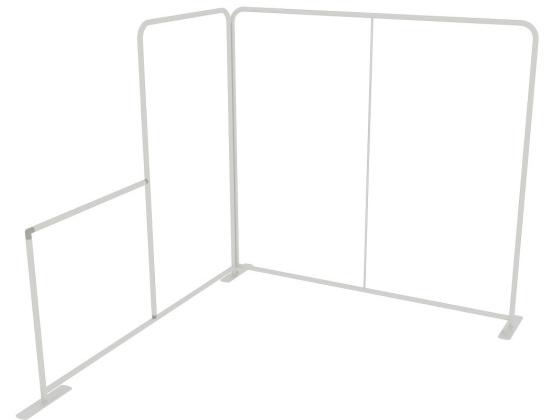
SINGLE SIDED
WHITE BACK FABRIC



SINGLE SIDED
BLACK BACK FABRIC



DOUBLE SIDED



EZ TUBE CONNECT RETURN WALL

PRODUCT CATEGORY: EZ FABRIC DISPLAYS

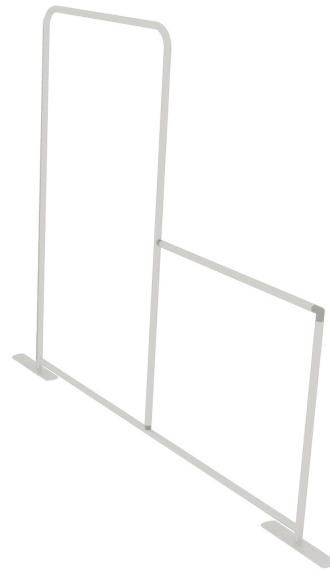
PRODUCT CODE: EZCNCT-RWL or EZCNCT-RWR



On Frame

On Graphic

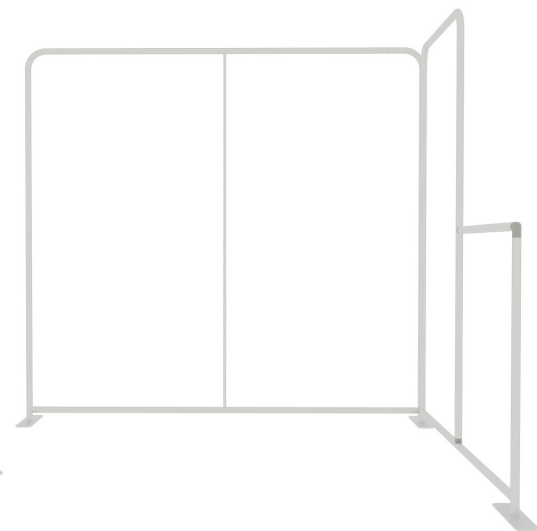
RETURN WALL - RIGHT IMAGES



SINGLE SIDED
WHITE BACK FABRIC



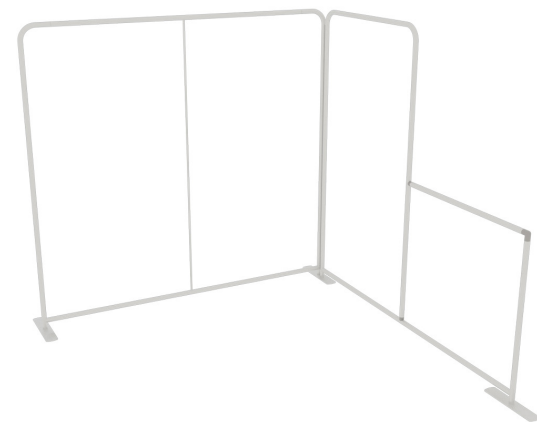
Shown w/EZ Tube Connect 10ft*
*Not Included



SINGLE SIDED
BLACK BACK FABRIC



DOUBLE SIDED



EZ TUBE CONNECT RETURN WALL

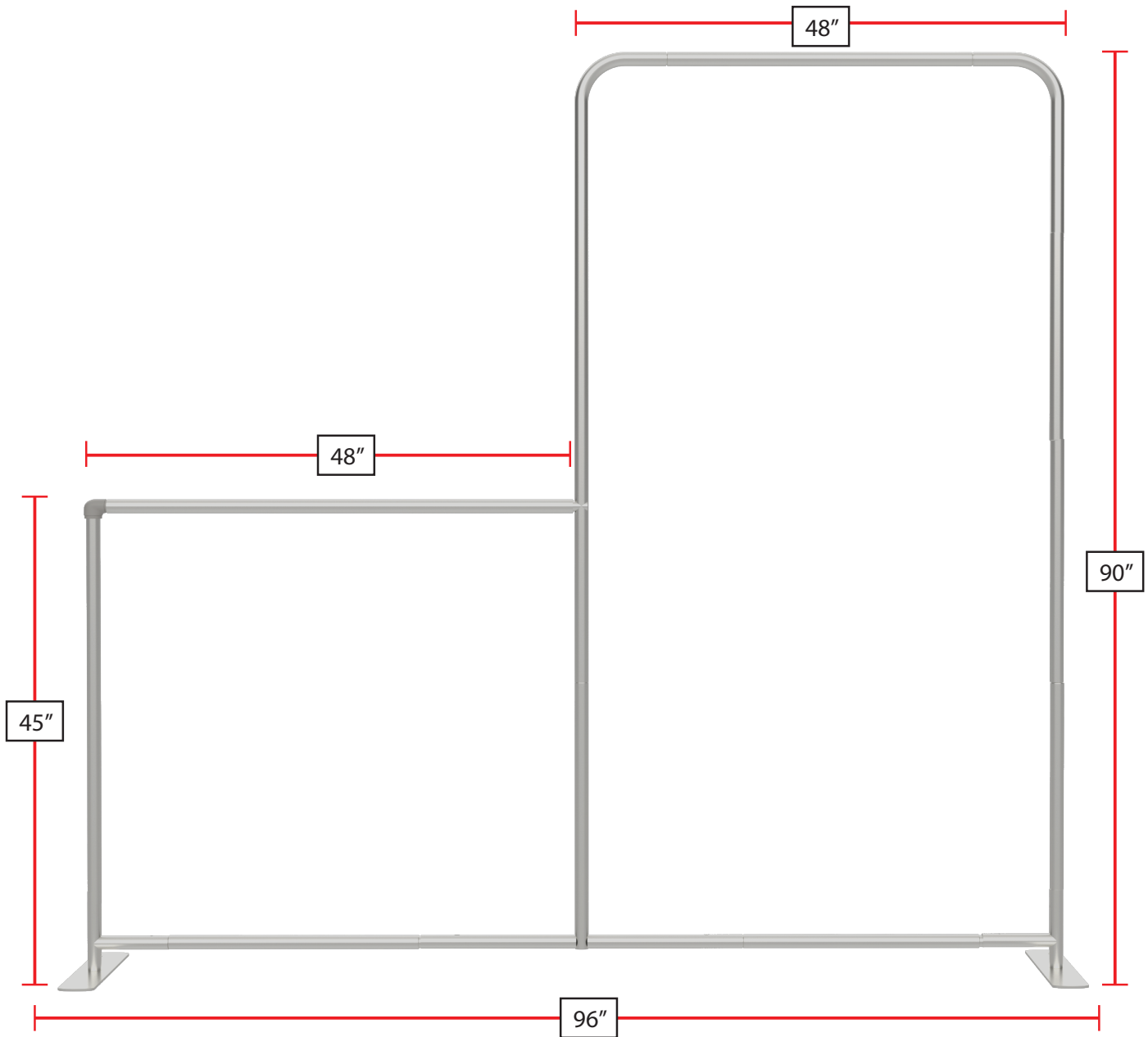
PRODUCT CATEGORY: EZ FABRIC DISPLAYS

PRODUCT CODE: EZCNCT-RWL or EZCNCT-RWR



On Frame

On Graphic



EZ TUBE CONNECT RETURN WALL

PRODUCT CATEGORY: EZ FABRIC DISPLAYS

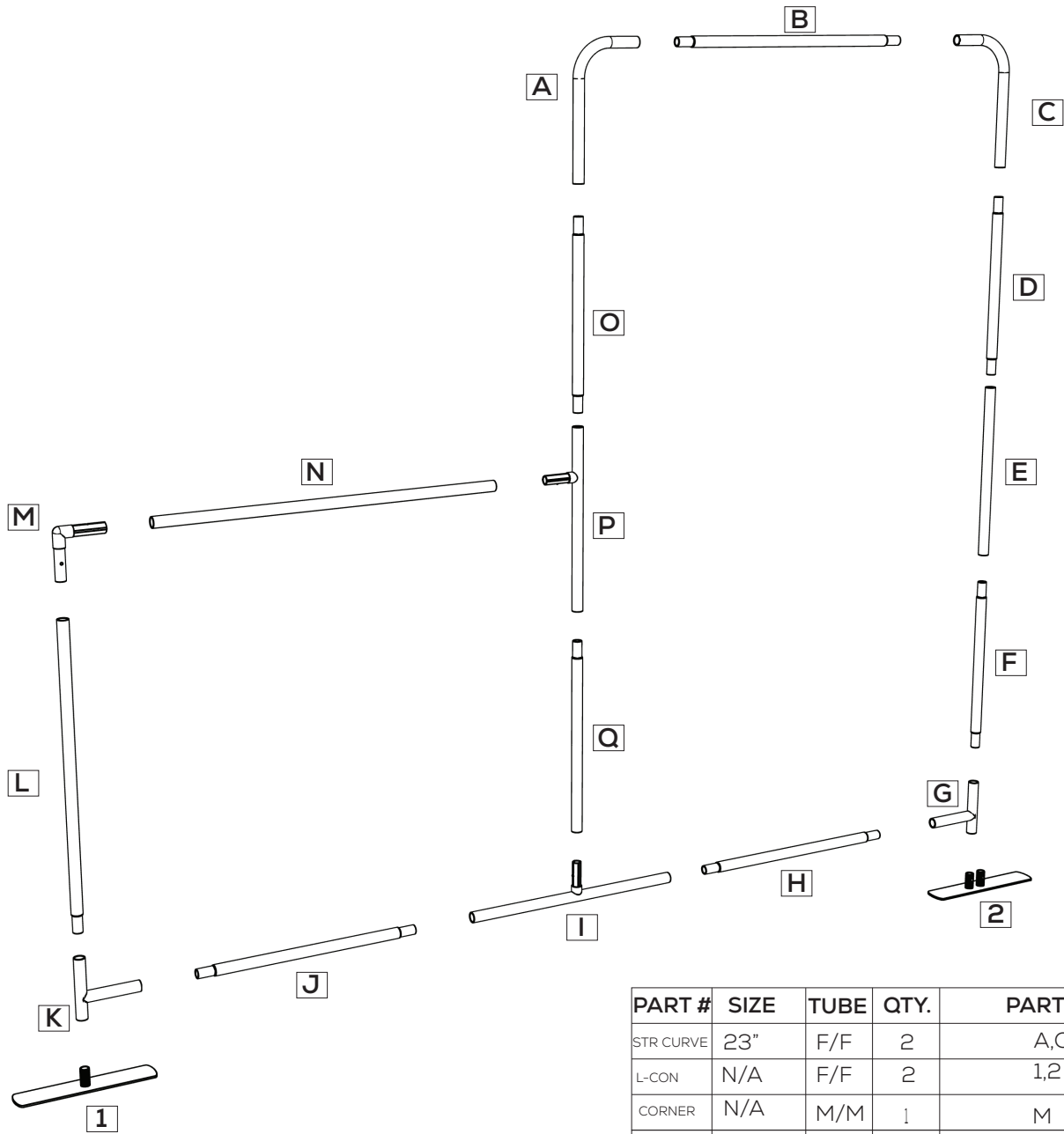
PRODUCT CODE: EZCNCT-RWL or EZCNCT-RWR



On Frame

On Graphic

PARTS LIST/INSTRUCTIONS



PART #	SIZE	TUBE	QTY.	PARTS
STR CURVE	23"	F/F	2	A,C
L-CON	N/A	F/F	2	1,2
CORNER	N/A	M/M	1	M
BCBLS	N/A	N/A	2	G,K
	34.250"	M/M	1	B
	25.125"	M/M	3	D,F,O
	23.125"	F/F	2	E,P
	26.875"	M/F	1	Q
	29.750"	M/M	2	H,J
	29.725"	F/F	1	I
	37.5"	M/F	1	L
	45"	F/F	1	N

∅ 34mm

EZ TUBE CONNECT RETURN WALL

PRODUCT CATEGORY: EZ FABRIC DISPLAYS

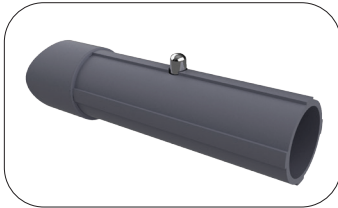
PRODUCT CODE: EZCNCT-RWL or EZCNCT-RWR



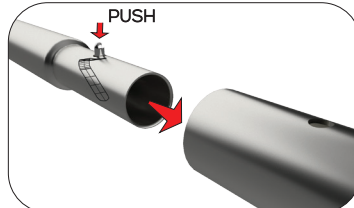
On Frame

On Graphic

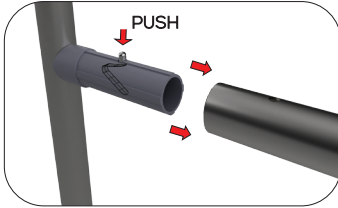
TUBE CONNECTION



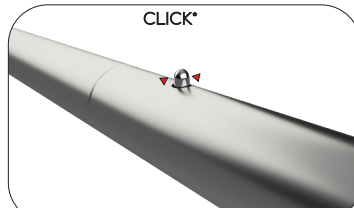
Define the location of the plastic connectors



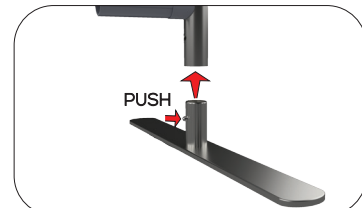
PUSH
Press button & insert swaged end into receiving end of tubing



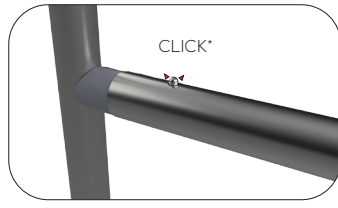
PUSH
Attach the female tube in the right position and push the button, and slide the tube



CLICK*
Push the female tube until the button snaps



PUSH
Press button & insert feet into receiving end of tubing



CLICK*
Push the female tube until the button snaps

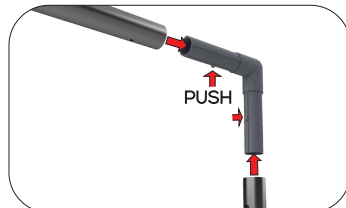


CLICK*
Push the female tube until the button snaps

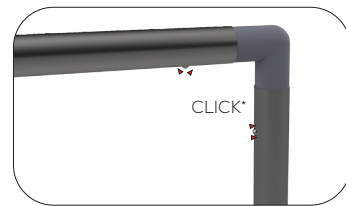
CORNER CONNECTION



Define the location of the plastic connectors

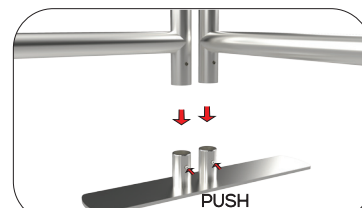
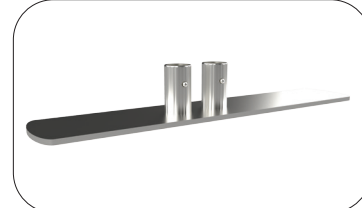


PUSH
Attach the female tube in the right position and push the button while sliding the tubes



CLICK*
Push the female tubes until the button snaps

FOOT CONNECTION



PUSH
Press button & insert feet into receiving end of tubing



CLICK*
Push the female tube until the button snaps