

EZ FABRIC CURVED TRIPLE COUNTER

EZ TUBE DISPLAYS

PRODUCT CODE: EZ-CRVFABCTR-G3



On frame On graphic



PRODUCT DESCRIPTION

Introducing the new EZ Fabric Counter display, developed to combine convenience and show. Push button snaps connect the lightweight aluminum framework together. Slip the fabric over the frame, hook and loop the fabric piece underneath and zip shut the backside. attach counter top. Graphics available on front, back, sides and top. See your printed graphic through the frosted acrylic counter top piece! this fully enclosed unit unzips to make for a convenient spot to hide stuff. Carry Nylon Bag included. With the Triple, three Curved frames are secured together to create a much larger width and longer curve around. Graphic wraps around the entire structure.

DISPLAY DIMENSION	94" W x 38" H x 46.5" L
GRAPHIC DIMENSIONS	186" W x 40" H

GRAPHIC MATERIAL

Stretch Fabric

GRAPHIC FINISHING

One piece. Inside hem. Two top zippers.

DISPLAY CONSTRUCTION

Aluminum Frame Acrylic Counter Top

SHIPPING WEIGHTS & DIMENSIONS

Shipping Weight	51 lbs (2 frames only) 27 lbs (frame with graphic)
Shipping Dimensions	50" H x 21" W x 14" D 50" H x 21" W x 7" D

LARGE QUANTITY FREIGHT

Freight Shipping	9 boxes per 49" L x 40" W x 69" H skids
Freight Weight	734 lbs (frames) 747 lbs (frames with graphic)

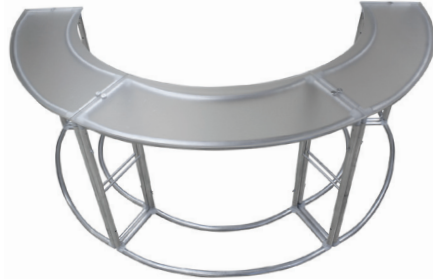
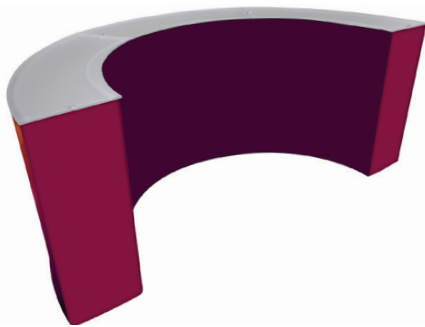
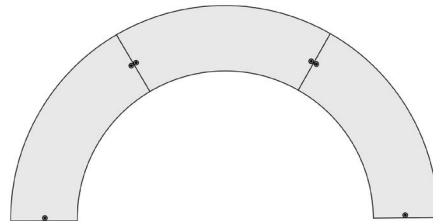
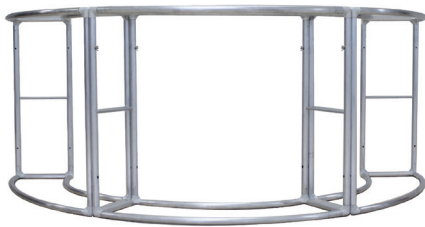
GRAPHIC TURN AROUND TIME

2 business days after proof approval

AVAILABLE ACCESSORIES

Curved Shelf

AVAILABILITY	CA and PA
TOP WEIGHT CAPACITY	75 lbs
SHELF WEIGHT CAPACITY	7 lbs



Screw & Wingnut
Frame Connection



Nylon Carry Bag



Optional Curved Shelf

EZ FABRIC CURVED TRIPLE COUNTER

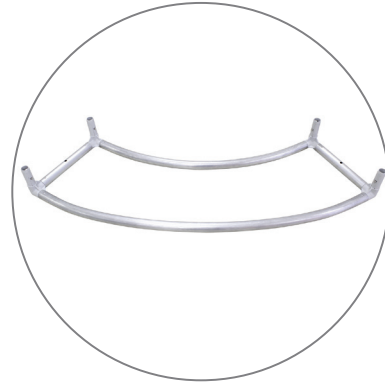
EZ TUBE DISPLAYS

PRODUCT CODE: EZ-CRVFABCTR-G3

PARTS LIST



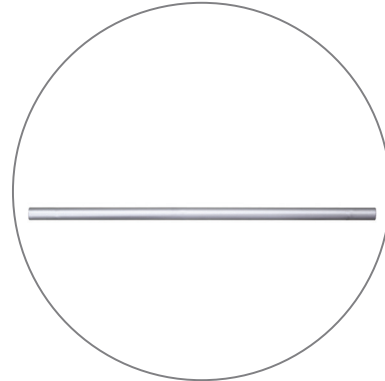
Qty 3 - Top Base
(Pre-drilled for acrylic counter)



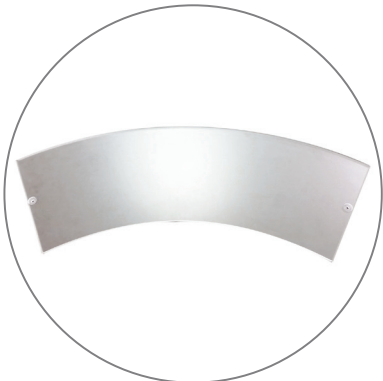
Qty 3 - Bottom Base



Qty 12 - 33" Vertical Support Bar



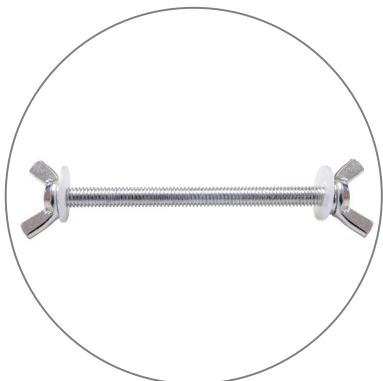
Qty 6 - 13.25" Horizontal Support Bar



Qty 3 - Acrylic Top Counter



Qty 6 - Large Head Bolt



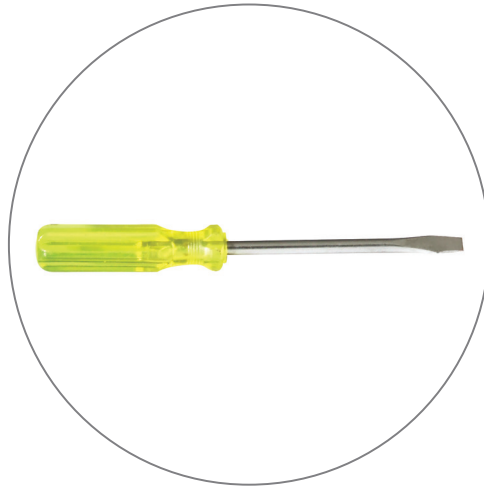
Qty 6 - Screw & Wingnut

EZ FABRIC CURVED TRIPLE COUNTER

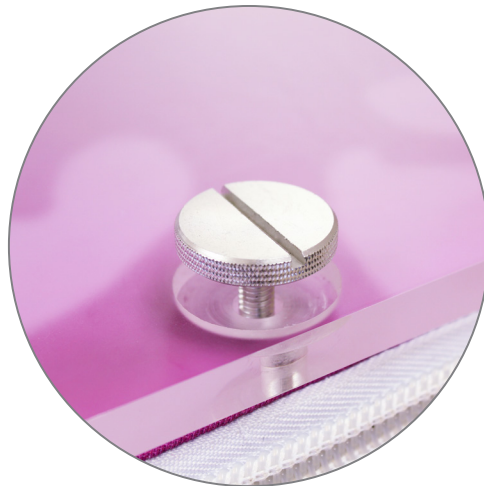
EZ TUBE DISPLAYS

PRODUCT CODE: EZ-CRVFABCTR-G3

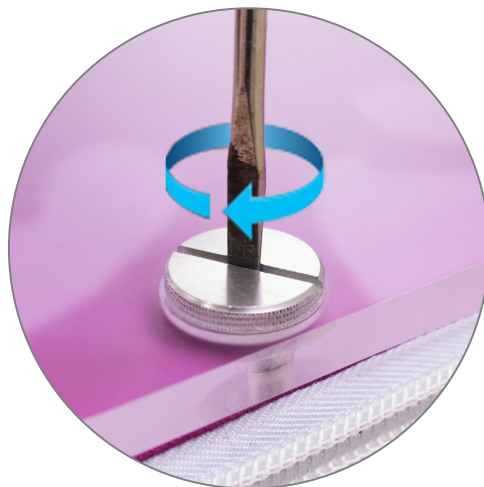
REQUIRED TOOLS



Flathead Screwdriver*



Insert head bolt.



Then screw and tighten.

**Note: Flathead Screwdriver NOT included.*

EZ FABRIC CURVED TRIPLE COUNTER

EZ TUBE DISPLAYS

PRODUCT CODE: EZ-CRVFABCTR-G3

SET UP INSTRUCTIONS 1/2

Step 1

First, start by building both vertical sides of the EZ Fabric Counter.



Step 2

Take (2) 33" support bars and (1) 13.25" support bar and connect them as shown above. Repeat the same process for another set.



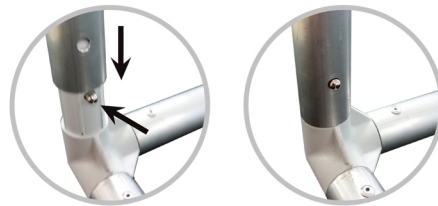
Step 3

Set out your bottom base on a flat surface. Be sure not to confuse this base with the top, which has (2) pre-drilled holes for the acrylic counter top. Locate the push-out caps on the inside of the posts.



Step 4

Push in and then hold the push-out cap on the bottom base so the support bar will slide on. Now slide each bar completely on to the bottom base. You will slide in one push-out cap at a time.



Step 5

The frame is now ready for the top base. Make sure it appears as shown above.



Step 6

Slide on the top base just as mentioned in step 4.



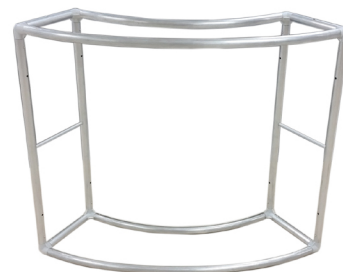
Step 7

Be sure that there is (1) pre-drilled hole on each side, facing up on the top base.



Step 8

Complete the first frame.



EZ FABRIC CURVED TRIPLE COUNTER

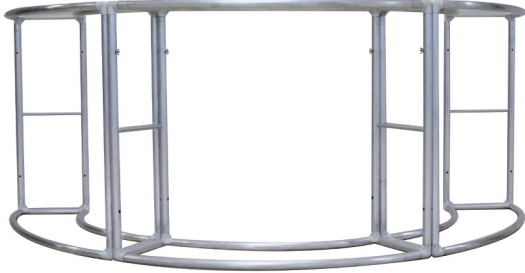
EZ TUBE DISPLAYS

PRODUCT CODE: EZ-CRVFABCTR-G3

SET UP INSTRUCTIONS 2/2

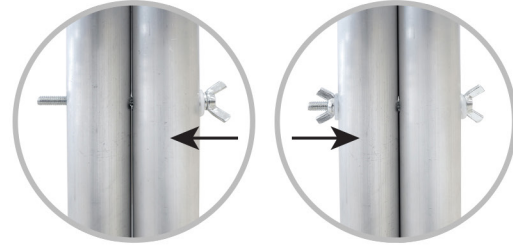
Step 9

Repeat same process for second and third frame and place frames side by side.



Step 10

Connect frames with bolts and wing nuts.



Step 11

Starting from the bottom, slide the graphic on to the frame.



Step 12

Zip up the graphic around the frame.



Step 13

Locate the pre-drilled hole on the top base. Make sure this hole aligns with the finished hole on the graphic.



Step 14

Align the acrylic counter top holes and insert the large head screws to secure the counter top to the frame.



Step 15

The install is now complete.

