

Instructions For:

Jumbo 8' Wide Retractor

Product Specifications

Visible Graphic: 94.75" x 77.75"

Total Graphic Print Size: 94.75" x 85.75"

Bottom Bleed: 8" of material will roll into retractor



Product Parts

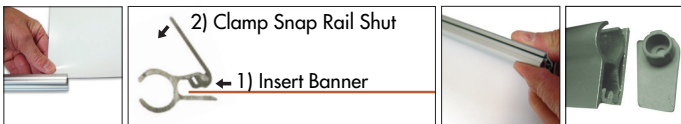
- 1 - Base
 - 2 - Banner Rail
 - 3 - Poles w/ Stretch Cord (qty 2)
 - 4 - Pin
- *Do not pull pin (4) until directed in Step 3**



Step 1

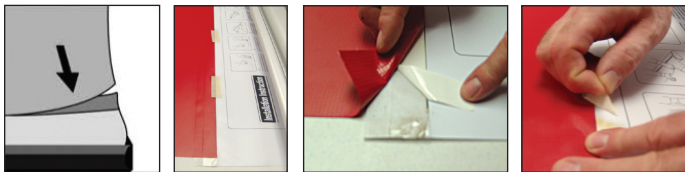
Take all parts out of the bag.
Place the banner on a clean flat surface.

Remove the ends from the Banner Rail (2) and open.
Slide the top edge of the banner into the rail. Press firmly to lock the banner into the rail and replace the end caps.



Step 2

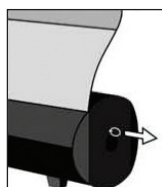
Lay the banner flat, printed side up. On the Base (1) you will find a leader with a stripe of adhesive, covered in protective paper. Remove this to expose the adhesive. Firmly and evenly press the bottom of the banner onto the adhesive, and be sure to smooth out any bubbles or wrinkles.



Step 3

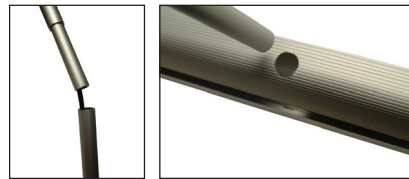
Maintain tension on the banner while slowly removing the Pin (4). Allow the banner to gently roll into the canister.

****Save the pin for future graphics changes.****



Step 4

Assemble the Poles (3).
Insert bottom of each assembled Pole (3) into the holes in the top of the Base (1). Poles must seat completely (past internal ledge). The poles will lean slightly backwards until a banner is in place.



Step 5

Due to the size 2 people will be needed for the following instructions:
Stand facing the back of the Base (1).

Gently pull the Banner Rail (2) straight upwards.

Hold the Poles (3) and the Banner Rail (2) and step backwards.

Tilt the unit onto its back and step backwards until you can place the hook on the Banner Rail (2) securely in the hole in the top of each the Pole (3).

Stand the unit upright.



Step 6

Rotate the legs underneath the Base (1) to sit perpendicular to the Base (1) for support.

