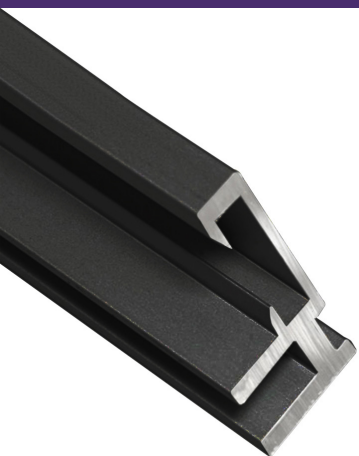


ASPEN SLIM 3 PACK 22" x 22"



Product Features

Walls looking bland? Add an Aspen Slim SEG display to brighten up the space. From showing off photos you've taken to marketing opportunities. Our Aluminum Extrusion is lightweight, making it great for wall mounting. Once you have your frame mounted to the wall. You can change your graphics out anytime. Making it the ideal display to change out seasonal advertising and messaging.

The ASPEN SLIM has a profile width of 19mm. (.75in.). Making this single-sided SEG extrusion the thinnest of them all. Less than half the profile width of ASPEN-40D, the outside finish is solid and smooth aluminum. The silicone beading can fit 12mm. (.47 in) deep and 4 mm. (.15 in.) wide into the trough of the frame. Not compatible with lights (cannot be backlit).

Specs

Specifications:

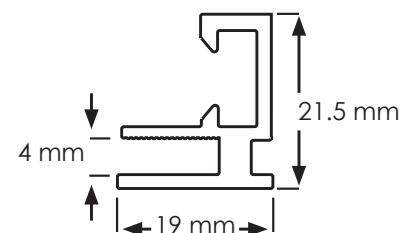
- 19 mm (.75 in) wide
- Single-sided graphic display
- 12 mm silicone keder

Product Applications:

- Wall decoration for home & office
- Retail store wall advertising
- Locker rooms
- and Much more

Features:

- Material: Stretch Fabric
- Print Process: Dye Sub Printing
- Warranty: One (1) year on graphics
Lifetime on hardware
- Shipping Weight: 10 lbs
- Shipping Dimensions: 24"L x 8"W x 8"H



Wall Mount

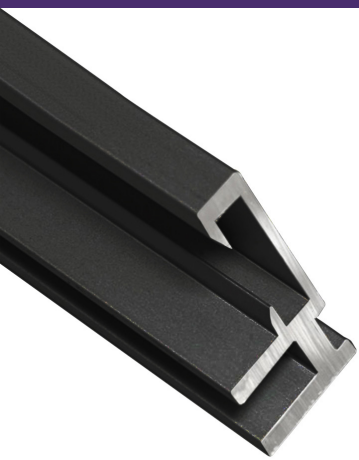
Includes

- (qty 12) 22" Aspen Slim Profiles
- (qty 12) Aspen Slim Corner Brackets w/Allen Key
- (qty 12) Aspen Slim Wall Mounts w/Screws
- (qty 3) 22" x 22" Stretch Fabric Prints w/SEG Finishing



Corner Connection

ASPEN SLIM 3 PACK 22" x 36"



Product Features

Walls looking bland? Add an Aspen Slim SEG display to brighten up the space. From showing off photos you've taken to marketing opportunities. Our Aluminum Extrusion is lightweight, making it great for wall mounting. Once you have your frame mounted to the wall. You can change your graphics out anytime. Making it the ideal display to change out seasonal advertising and messaging.

The ASPEN SLIM has a profile width of 19mm. (.75in.). Making this single-sided SEG extrusion the thinnest of them all. Less than half the profile width of ASPEN-40D, the outside finish is solid and smooth aluminum. The silicone beading can fit 12mm (.47 in) deep and 4 mm (.15 in.) wide into the trough of the frame. Not compatible with lights (cannot be backlit).

Specs

Specifications:

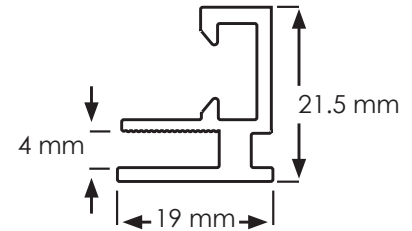
- 19 mm (.75 in) wide
- Single-sided graphic display
- 12 mm silicone keder

Product Applications:

- Wall decoration for home & office
- Retail store wall advertising
- Locker rooms
- and Much more

Features:

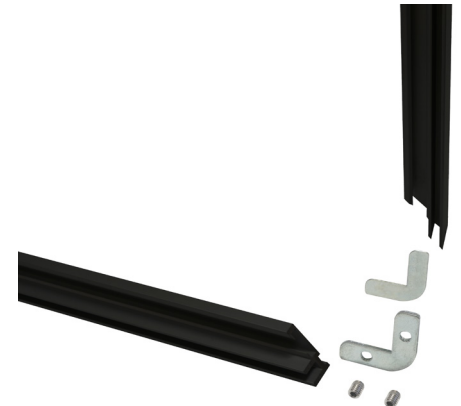
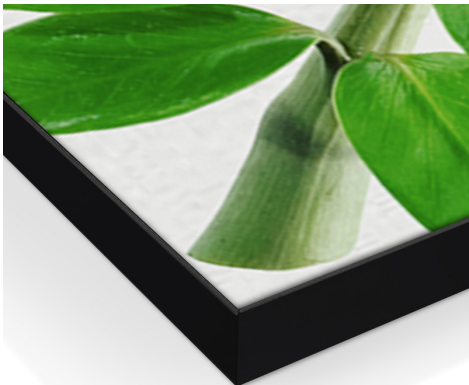
- Material: Stretch Fabric
- Print Process: Dye Sub Printing
- Warranty: One (1) year on graphics
Lifetime on hardware
- Shipping Weight: 10 lbs
- Shipping Dimensions: 36"L x 8"W x 8"H



Wall Mount

Includes

- (qty 6) 22" Aspen Slim Profiles
- (qty 6) 36" Aspen Slim Profiles
- (qty 12) Aspen Slim Corner Brackets w/Allen Key
- (qty 12) Aspen Slim Wall Mounts w/Screws
- (qty 3) 22" x 36" Stretch Fabric Prints w/SEG Finishing



Corner Connection

ASPEN SLIM WALL MOUNT INSTRUCTIONS

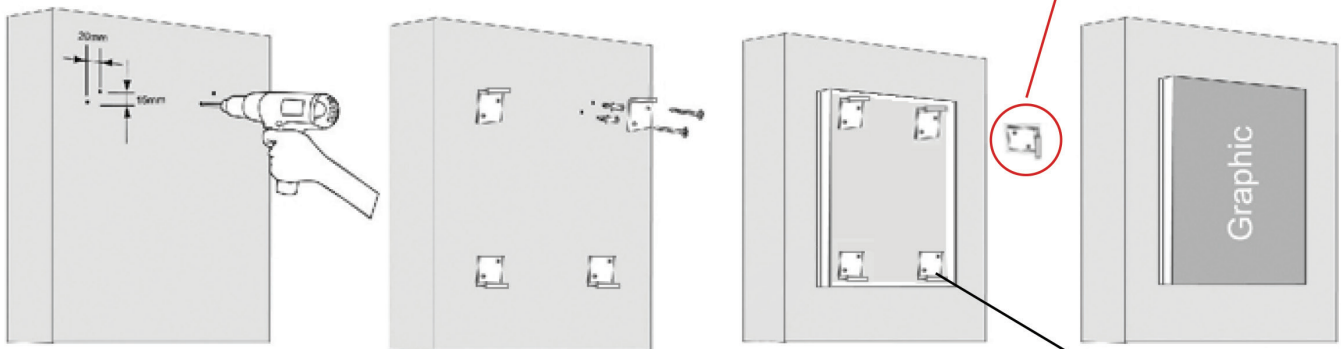
FRAME ASSEMBLY INSTRUCTIONS

Corner Connector Installation

1. Align front lock plate with back pressure plate back to back
2. Slide the aligned pieces into the channel of the extrusion
3. Slide the adjacent extrusion onto the corner connector
4. Tighten screws with allen key
5. Repeat process for all sides



You can use the bracket along the vertical or horizontal section located on the inside of the frame.



Wall Mount Installation

1. Screw 4 wall mounts to wall close enough for the threaded screw to be able to apply pressure to the frame
2. Use an allen key and tighten each screw apply pressure along each side of the frame
3. Install graphic

